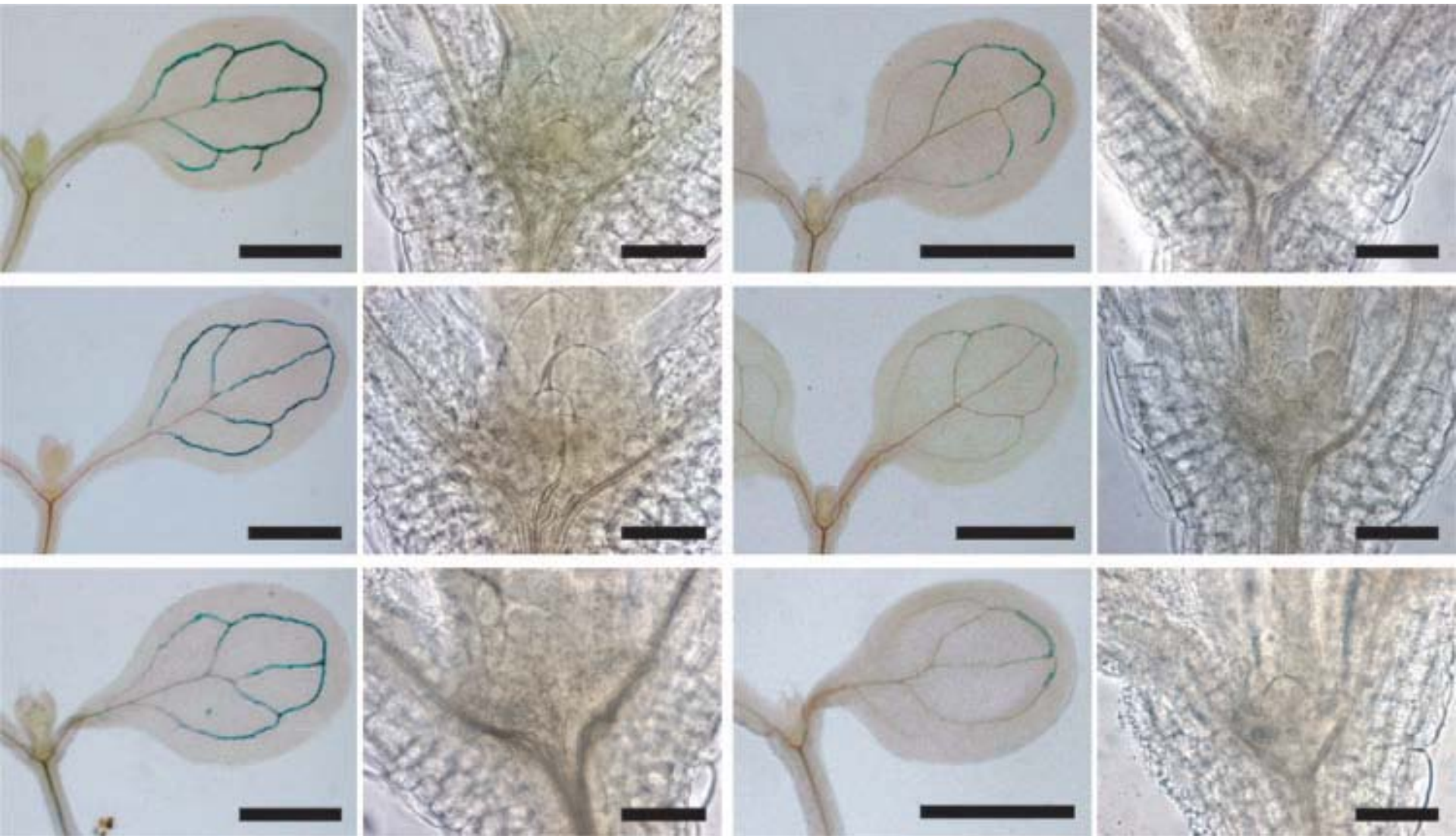


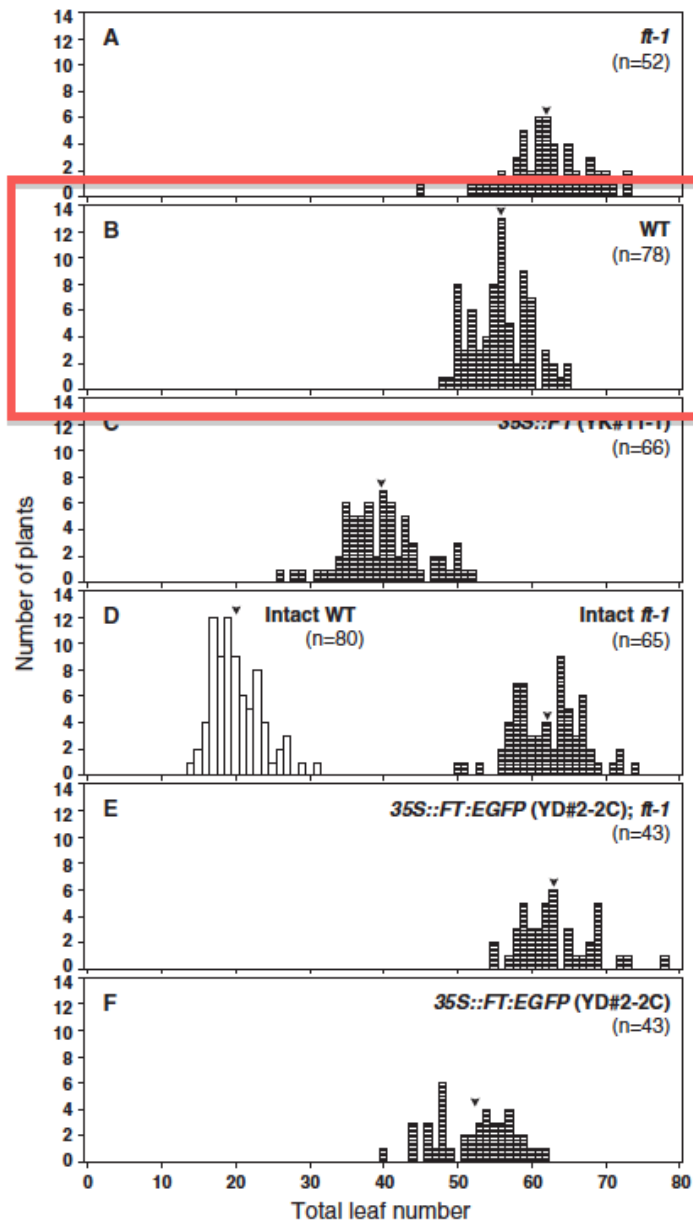
FLOWERING LOCUS T (3)

The controversy goes on

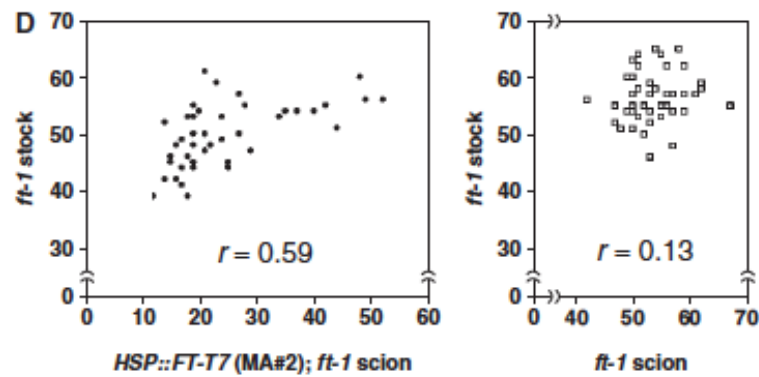
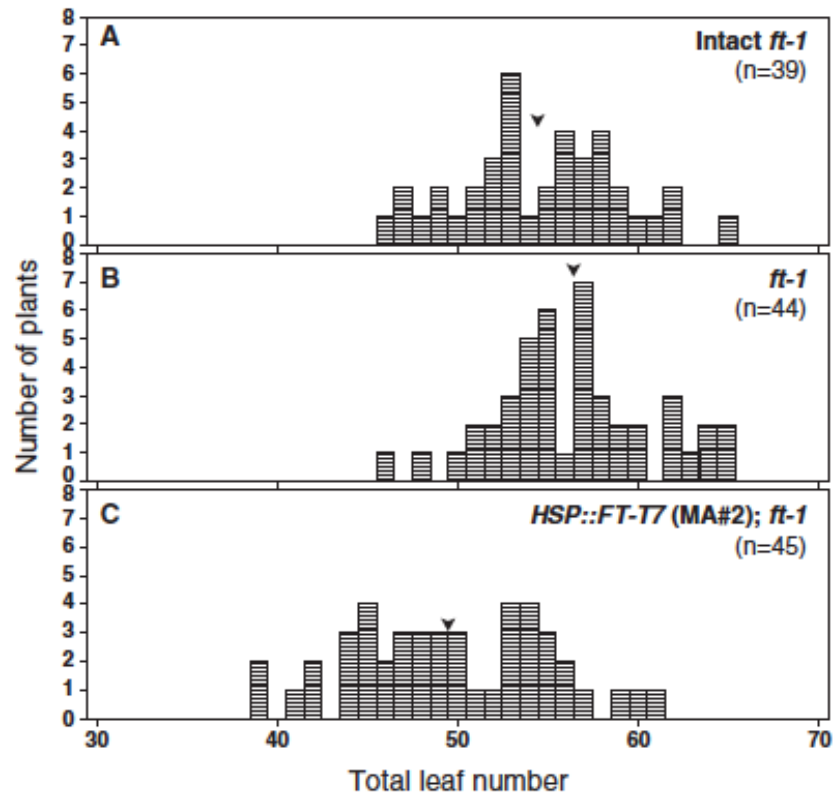
- Notaguchi, M. *et al.* Long-distance, graft-transmissible action of Arabidopsis FLOWERING LOCUS T protein to promote flowering. *Plant Cell Physiol* **49**, 1645–1658 (2008).



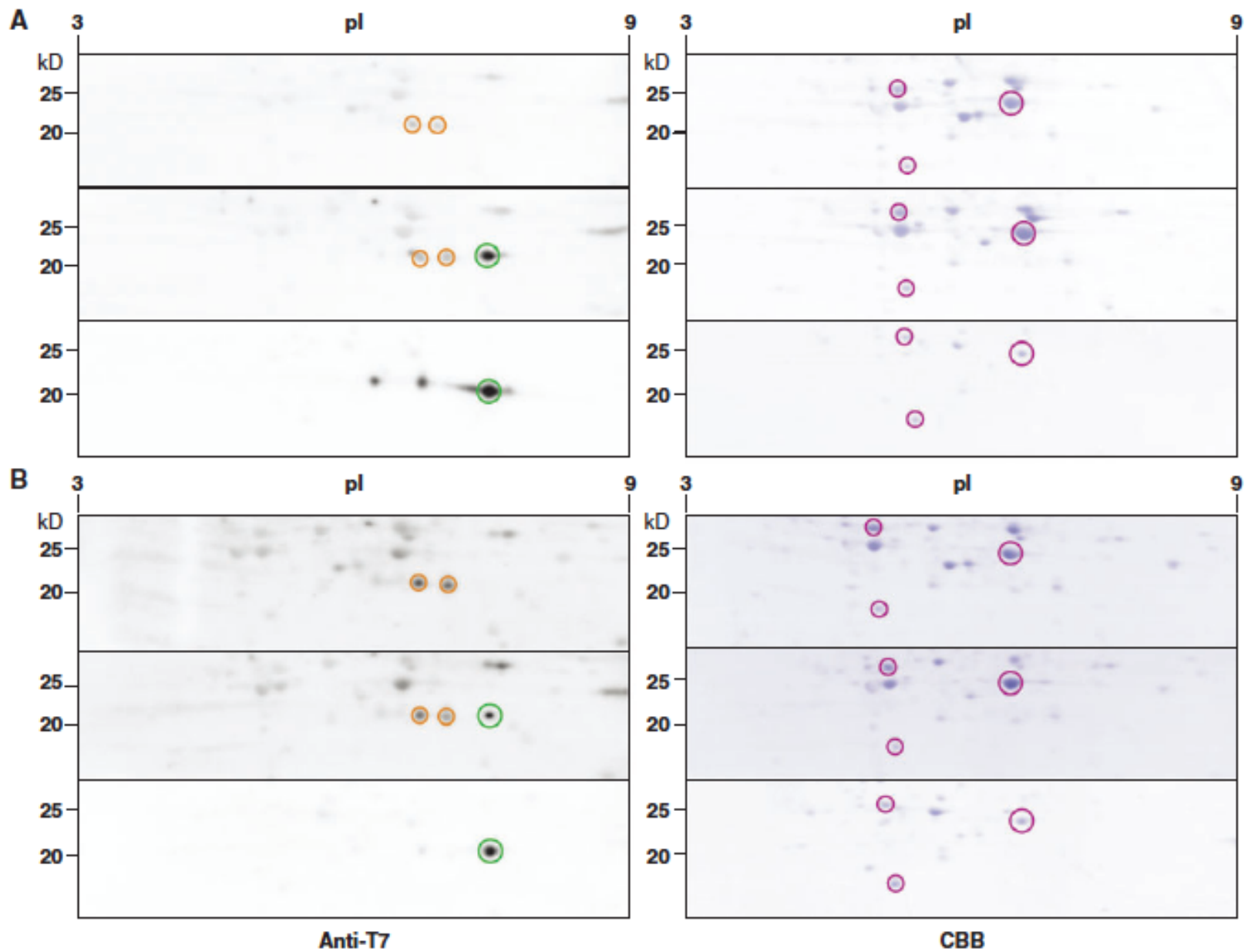
Notaguchi, M. *et al.* Long-distance, graft-transmissible action of Arabidopsis FLOWERING LOCUS T protein to promote flowering. *Plant Cell Physiol* **49**, 1645–1658 (2008).



Notaguchi, M. *et al.* Long-distance, graft-transmissible action of Arabidopsis FLOWERING LOCUS T protein to promote flowering. *Plant Cell Physiol* **49**, 1645–1658 (2008).



Notaguchi, M. *et al.* Long-distance, graft-transmissible action of Arabidopsis FLOWERING LOCUS T protein to promote flowering. *Plant Cell Physiol* **49**, 1645–1658 (2008).



Notaguchi, M. *et al.* Long-distance, graft-transmissible action of Arabidopsis FLOWERING LOCUS T protein to promote flowering. *Plant Cell Physiol* **49**, 1645–1658 (2008).

A

```

ATG TCT ATA AAT ATA AGA GAC CCT CTT ATA GTA AGC AGA GTT GTT GGA GAC GTT CTT GAT CCG TTT AAT AGA
ATG TCA ATT AAC ATT CGT GAT CCA TTG ATT GTT TCT AGG GTG GTG GGT GAT GTG TTG GAC CCT TTC AAC AGG

TCA ATC ACT CTA AAG GTT ACT TAT GGC CAA AGA GAG GTG ACT AAT GGC TTG GAT CTA AGG CCT TCT CAG GTT
TCT ATT ACA CTT AAA GTG ACA TAC GGA CAG ADG GAA GTT ACA AAC GGA CTT GAC CTT AGA CCA TCA CAA GTG

CAA AAC AAG CCA AGA GTT GAG ATT GGT GGA GAA GAC CTC AGG AAC TTC TAT ACT TTG GTT ATG GTG GAT CCA
CAG AAT AAA CCT AGG GTG GAA ATC GGA GGT GAG GAT CTT AGA AAT TTT TAC ACA CTT GTG ATG GTT GAC CCT

GAT GTT CCA AGT CCT AGC AAC CCT CAC CTC CGA GAA TAT CTC CAT TGG TTG GTG ACT GAT ATC CCT GCT ACA
GAC GTG CCT TCT CCA TCT AAT CCA CAT CTT AGA GAG TAC CTT CAC TGG CTT GTT ACA GAC ATT CCA GCA ACT

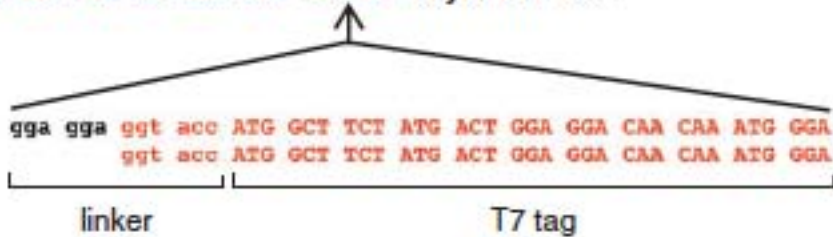
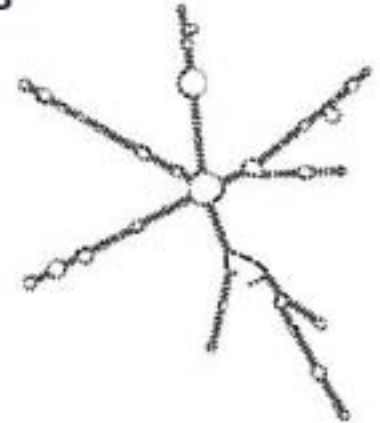
ACT GGA ACA ACC TTT GGC AAT GAG ATT GTG TGT TAC GAA AAT CCA AGT CCC ACT GCA GGA ATT CAT CGT GTC
ACA GGT ACT ACT TTC GGA AAC GAA ATC GTT TGC TAT GAG AAC CCT TCT CCT ACA GCT GGT ATC CAC AGA GTT

GTG TTT ATA TTG TTT CGA CAG CTT GGC AGG CAA ACA GTG TAT GCA CCA GGG TGG CGC CAG AAC TTC AAC ACT
GTT TTC ATT CTT TTC AGA CAA TTG GGA AGA CAG ACT GTT TAC GCT CCT GGA TGG AGA CAA AAT TTT AAT ACA

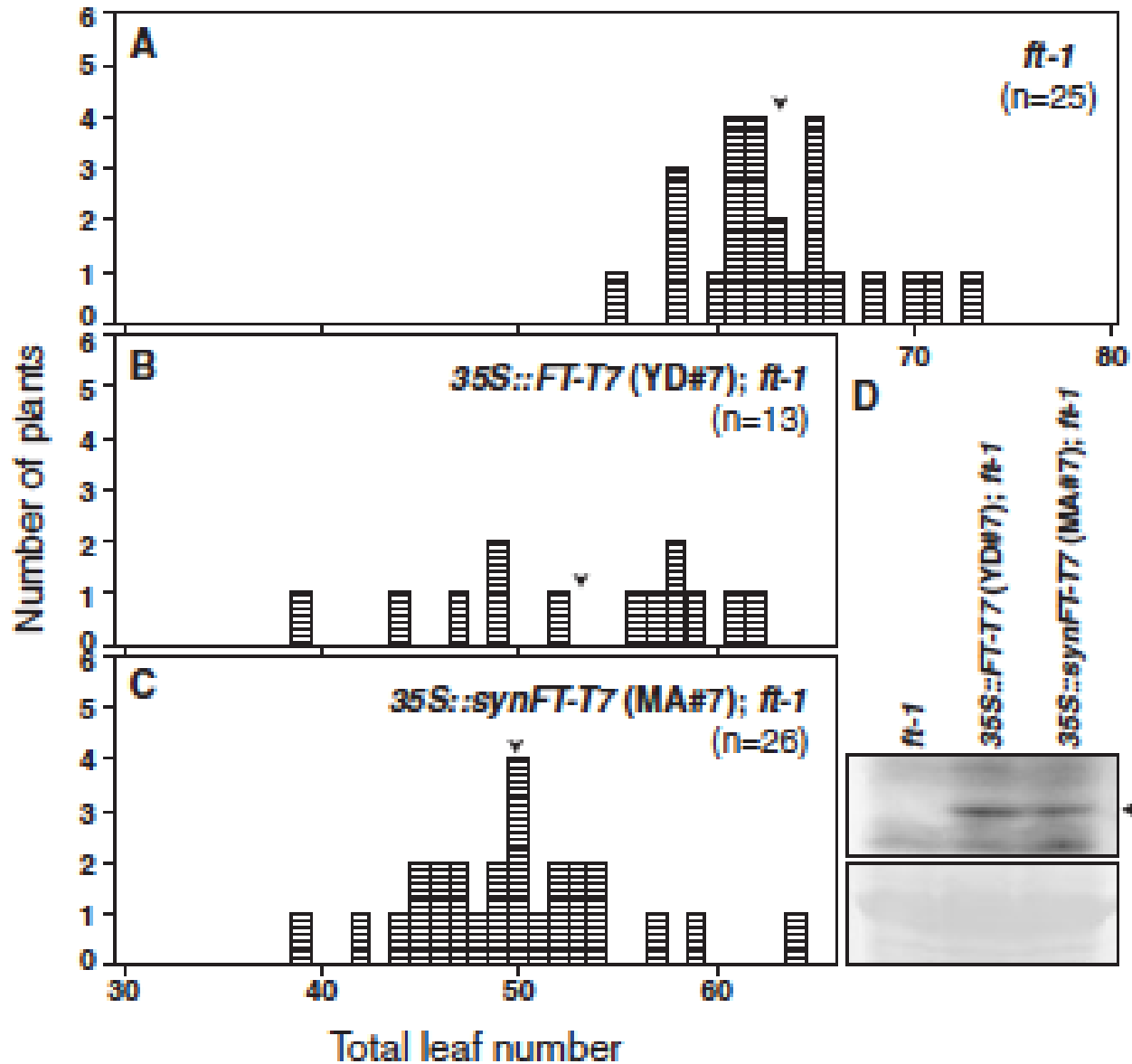
CGC GAG TTT GCT GAG ATC TAC AAT CTC GGC CTT CCC GTG GCC GCA GTT TTC TAC AAT TGT CAG AGG GAG AGT
AGA GAA TTC GCA GAA ATA TAT AAC CTT GGA TTG CCT GTT GCT GCT GTG TTT TAT AAC TGC CAA AGA GAA TCT

GGC TGC GCA GGA AGA AGA CTT TAG : FT-T7 ORF
GGA TGT GGT GGT AGG AGG TTG TAG : synFT-T7 ORF

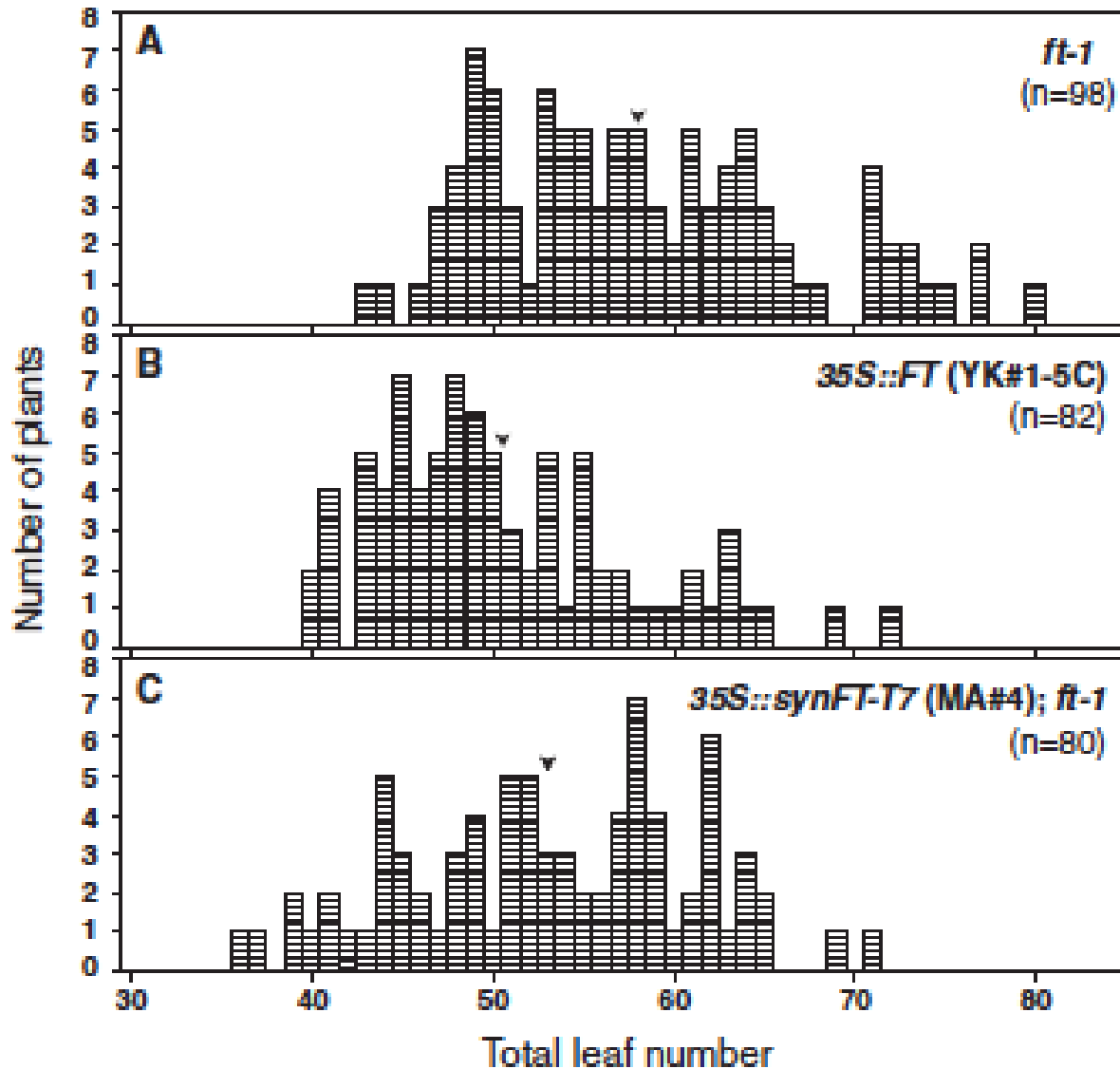
```

**B****C**

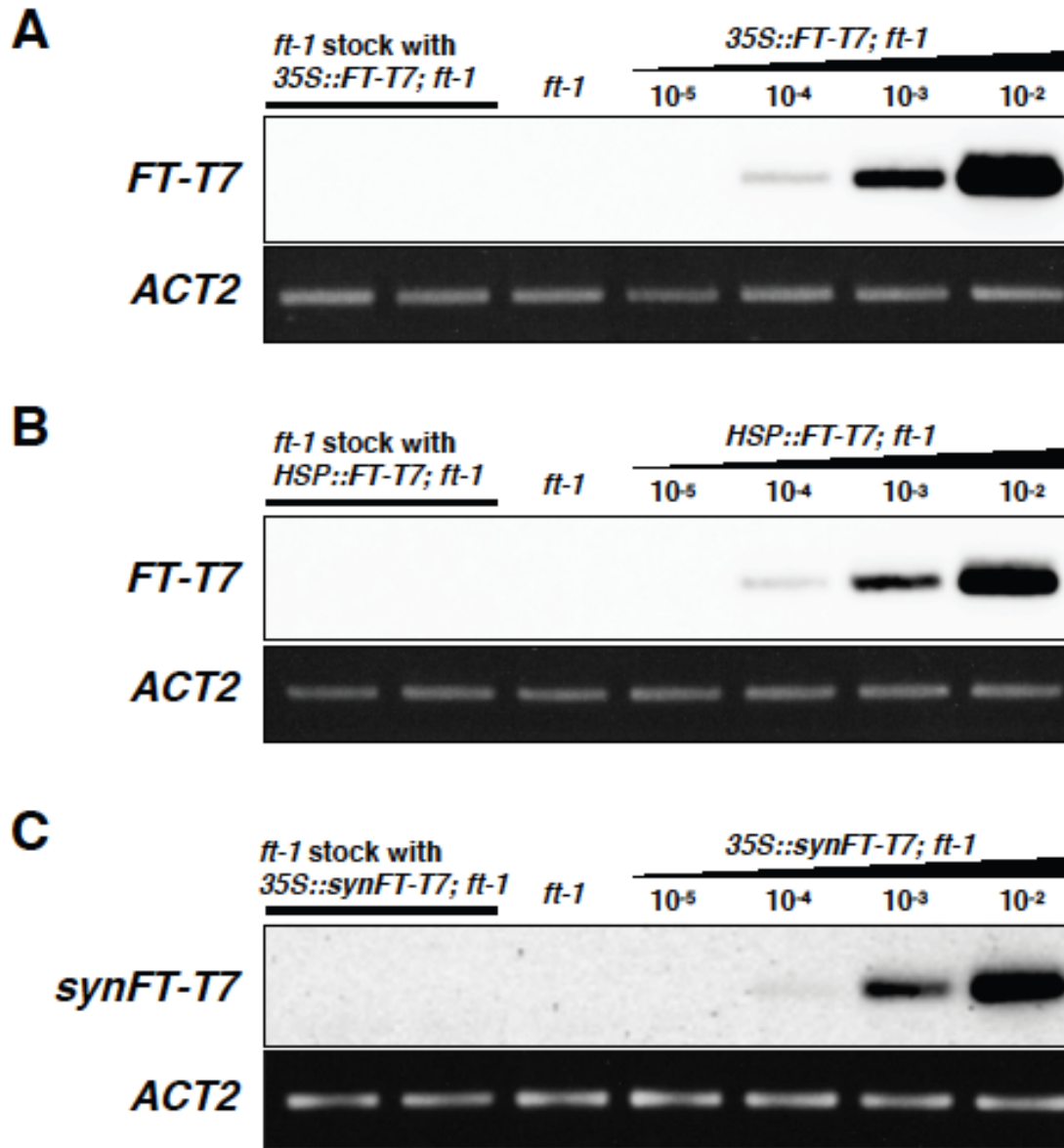
Notaguchi, M. *et al.* Long-distance, graft-transmissible action of Arabidopsis FLOWERING LOCUS T protein to promote flowering. *Plant Cell Physiol* **49**, 1645–1658 (2008).



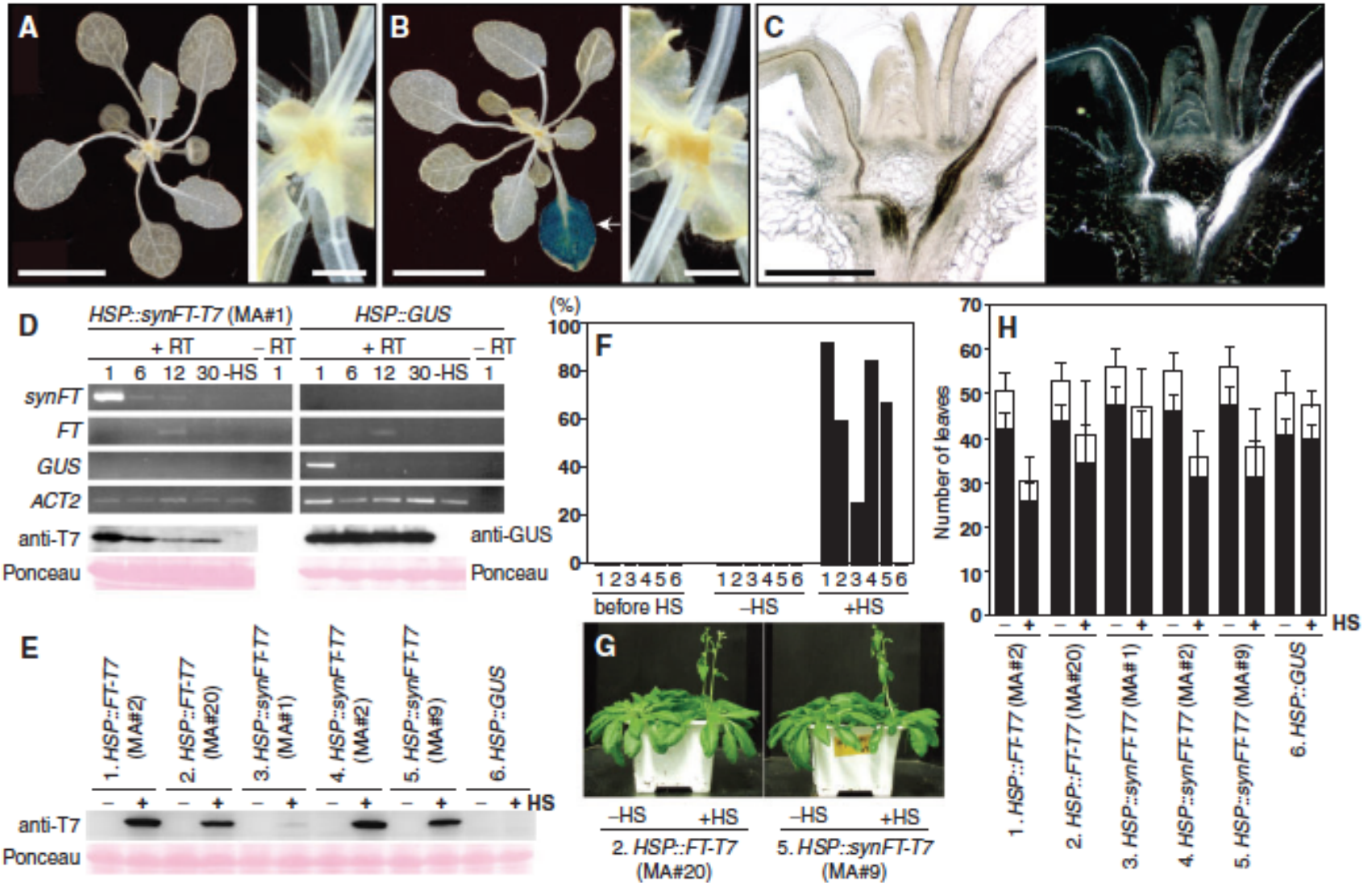
Notaguchi, M. *et al.* Long-distance, graft-transmissible action of Arabidopsis FLOWERING LOCUS T protein to promote flowering. *Plant Cell Physiol* **49**, 1645–1658 (2008).



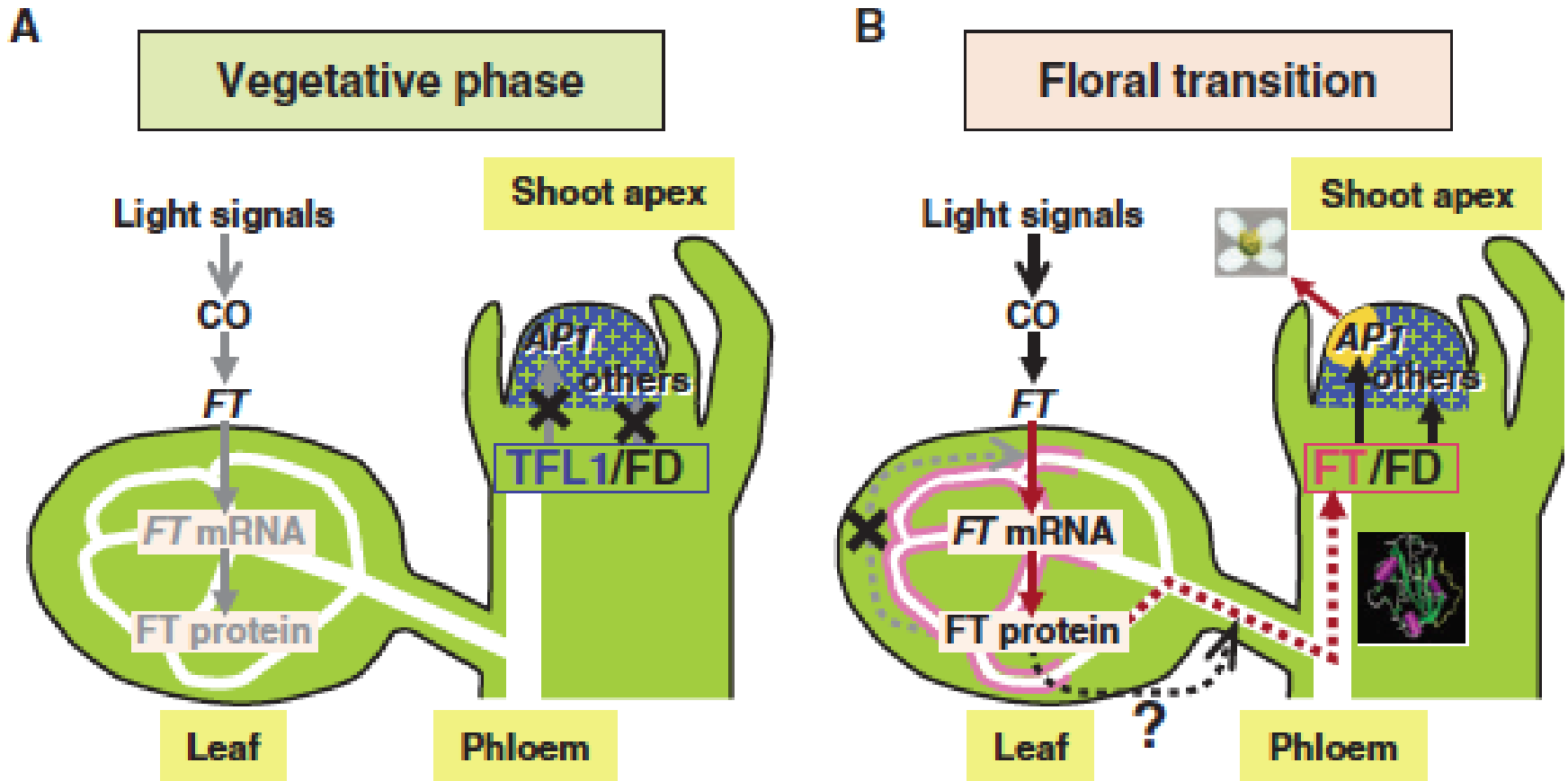
Notaguchi, M. *et al.* Long-distance, graft-transmissible action of Arabidopsis FLOWERING LOCUS T protein to promote flowering. *Plant Cell Physiol* **49**, 1645–1658 (2008).



Notaguchi, M. *et al.* Long-distance, graft-transmissible action of Arabidopsis FLOWERING LOCUS T protein to promote flowering. *Plant Cell Physiol* **49**, 1645–1658 (2008).

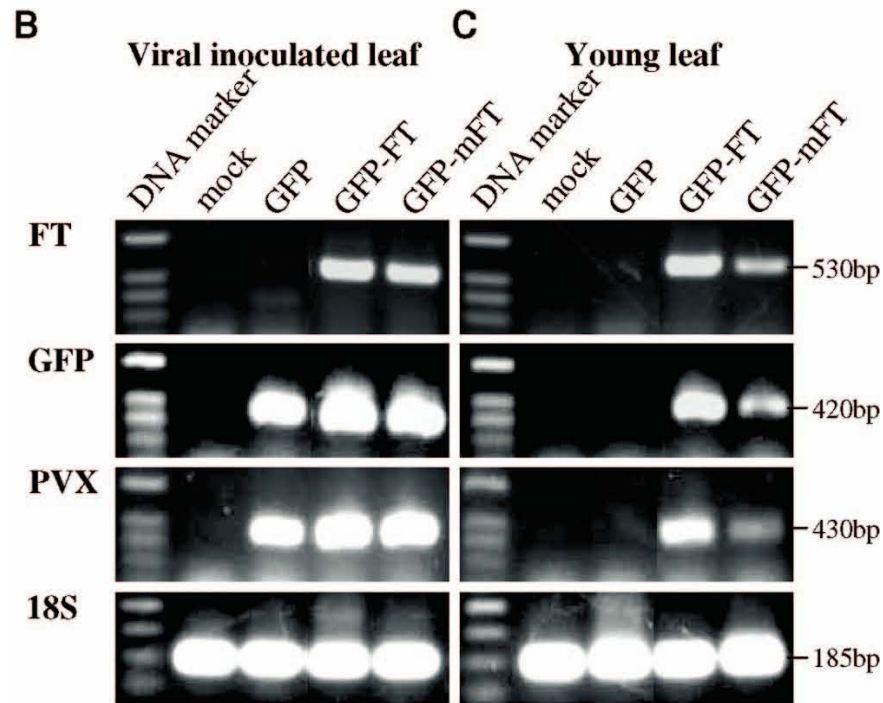
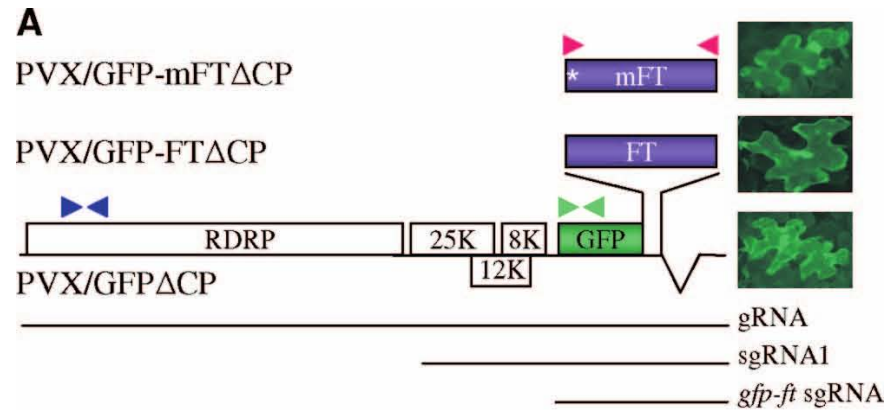


Notaguchi, M. *et al.* Long-distance, graft-transmissible action of Arabidopsis FLOWERING LOCUS T protein to promote flowering. *Plant Cell Physiol* **49**, 1645–1658 (2008).

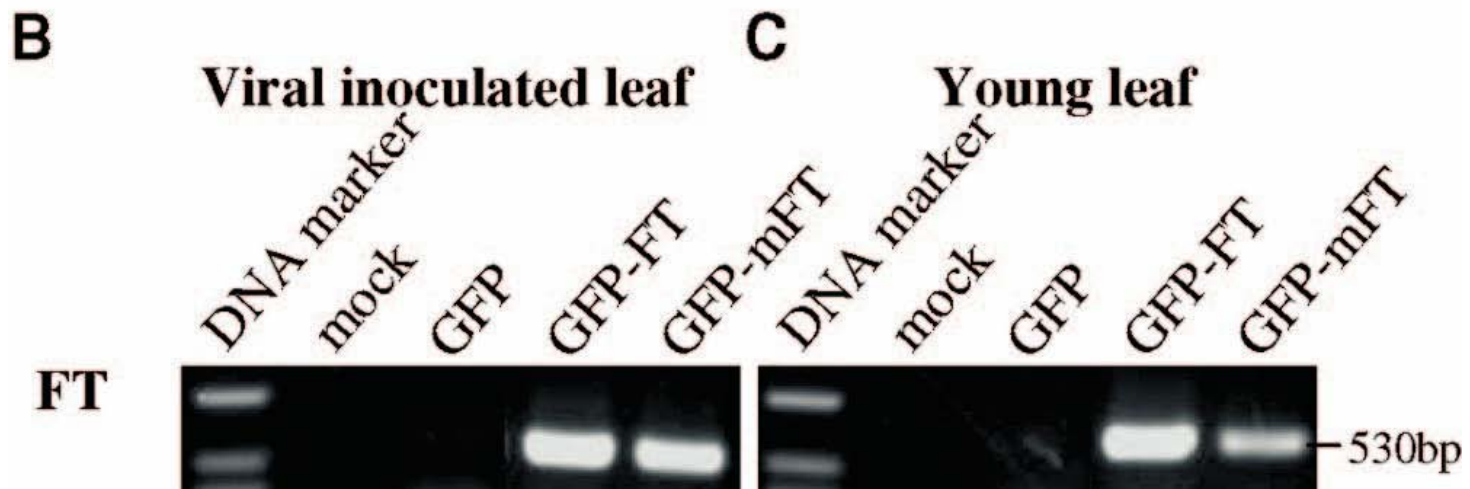
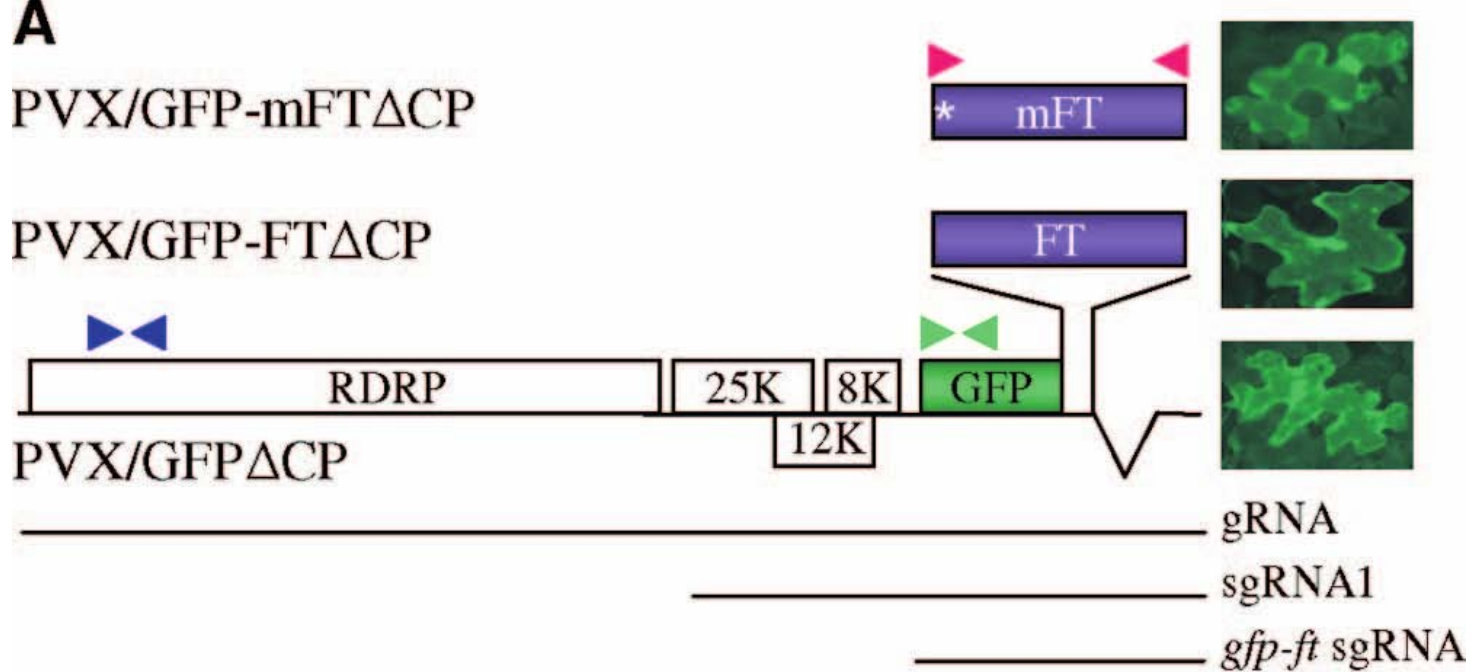


Notaguchi, M. *et al.* Long-distance, graft-transmissible action of Arabidopsis FLOWERING LOCUS T protein to promote flowering. *Plant Cell Physiol* **49**, 1645–1658 (2008).

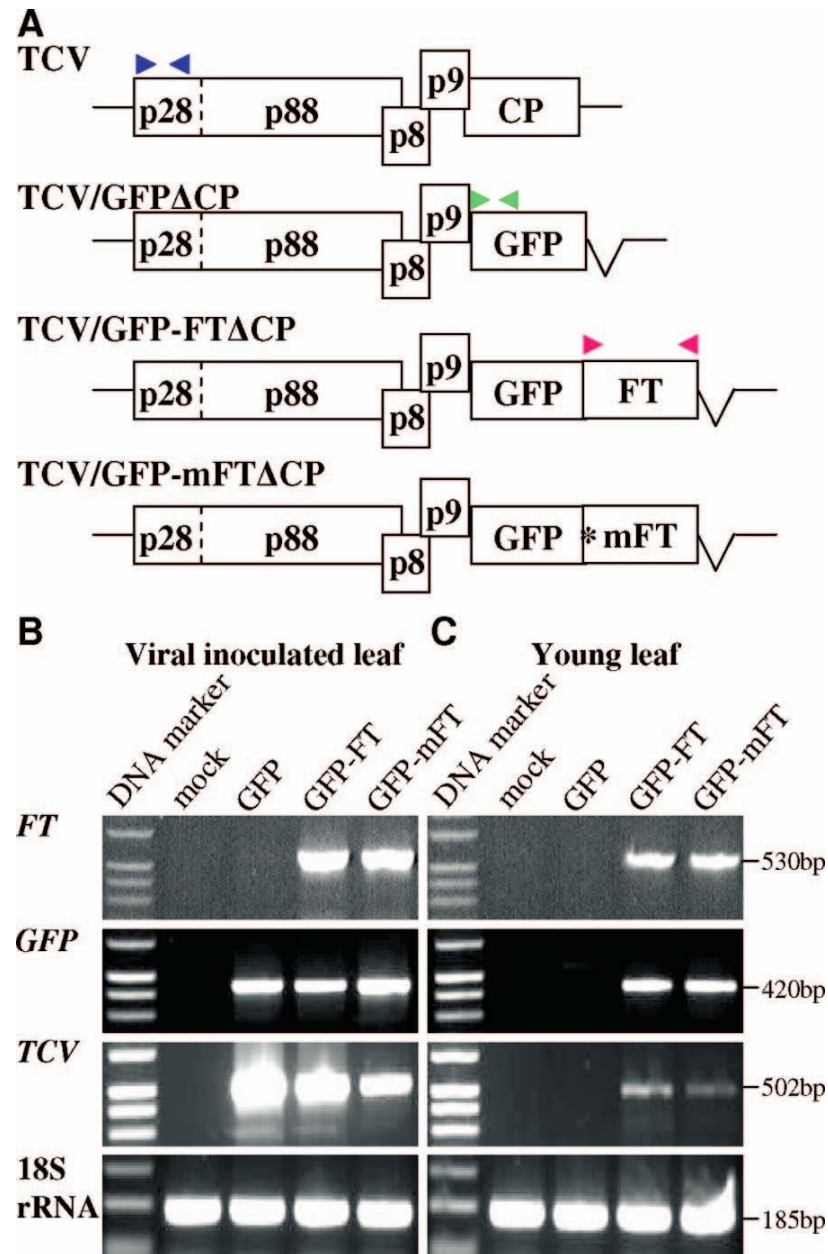
- 1. Li, C. *et al.* A cis element within flowering locus T mRNA determines its mobility and facilitates trafficking of heterologous viral RNA. *J. Virol.* **83**, 3540–3548 (2009).



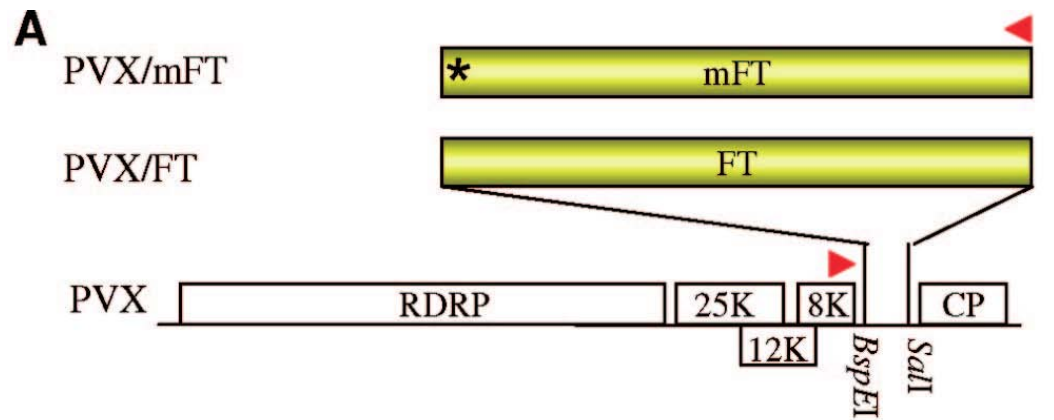
Li, C. *et al.* A cis element within flowering locus T mRNA determines its mobility and facilitates trafficking of heterologous viral RNA. *J. Virol.* **83**, 3540–3548 (2009).



Li, C. *et al.* A cis element within flowering locus T mRNA determines its mobility and facilitates trafficking of heterologous viral RNA. *J. Virol.* **83**, 3540–3548 (2009).



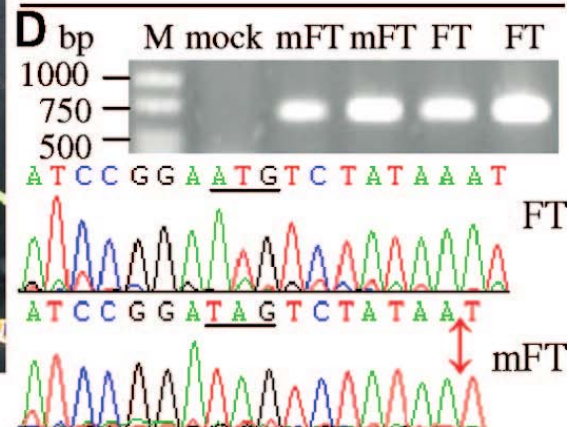
Li, C. *et al.* A cis element within flowering locus T mRNA determines its mobility and facilitates trafficking of heterologous viral RNA. *J. Virol.* **83**, 3540–3548 (2009).



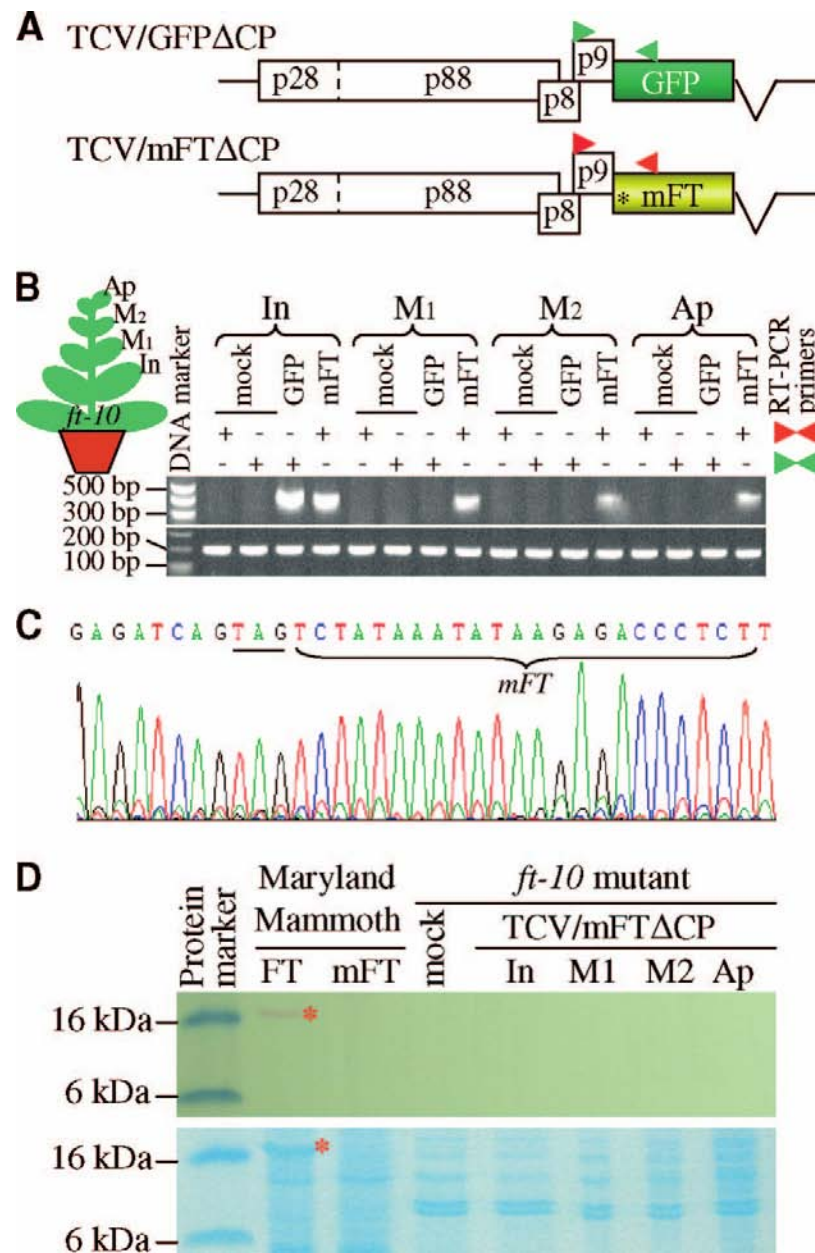
Mock PVX/mFT PVX/FT

C

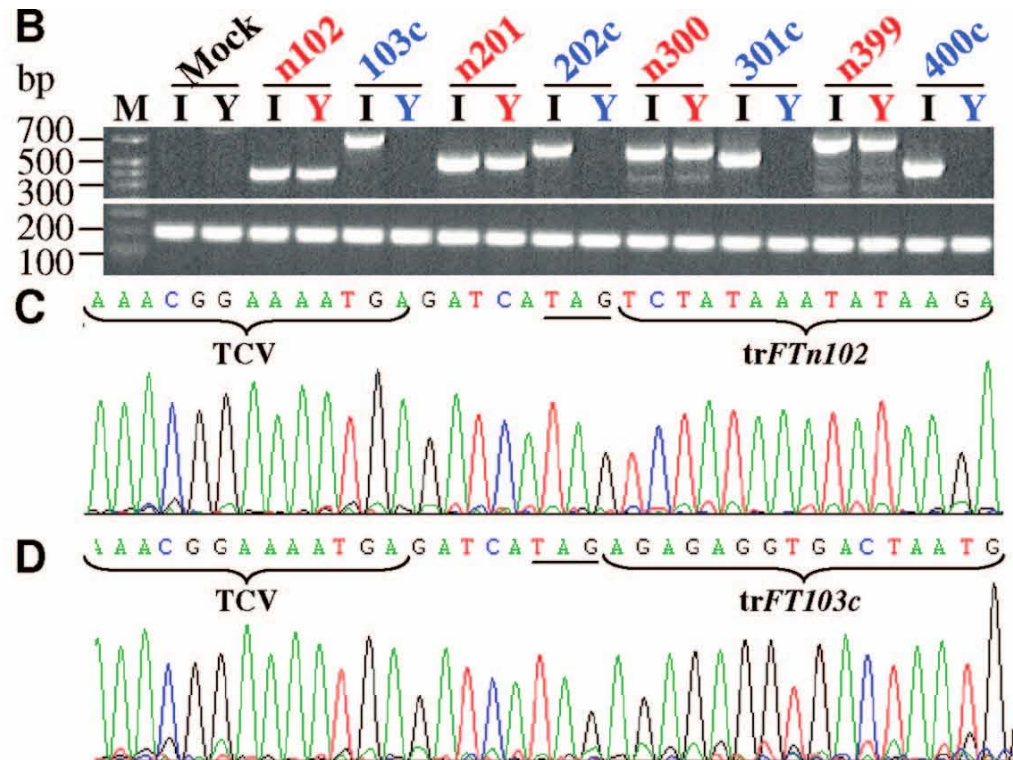
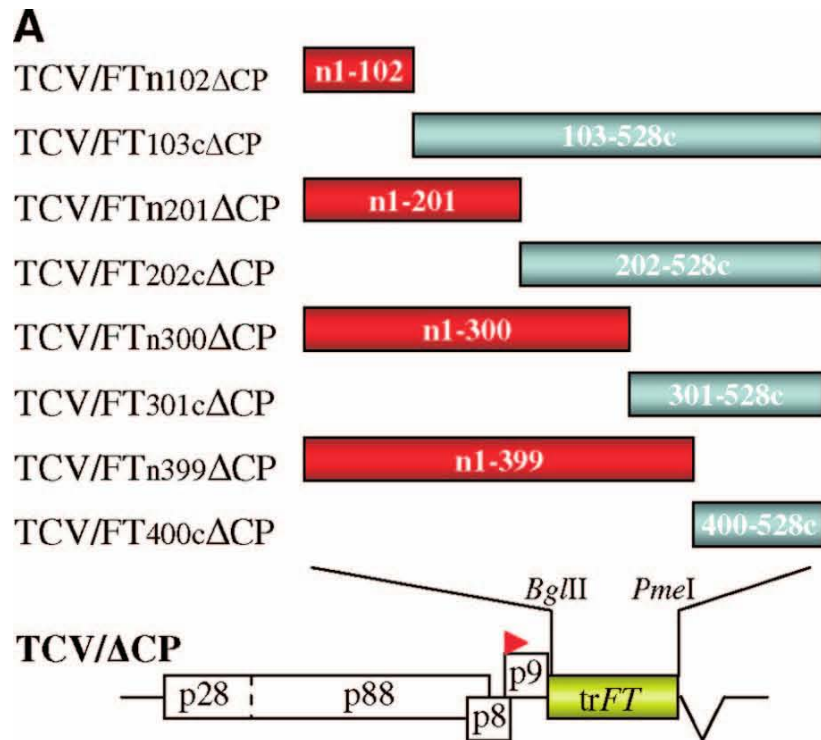
	Exp I	II	III
Mock	0/4	0/4	0/4
PVX/GFP	-	0/4	0/4
PVX/GFP-FT	-	0/4	0/4
PVX/FT	4/4	4/4	4/4
PVX/mFT	0/4	0/4	0/4



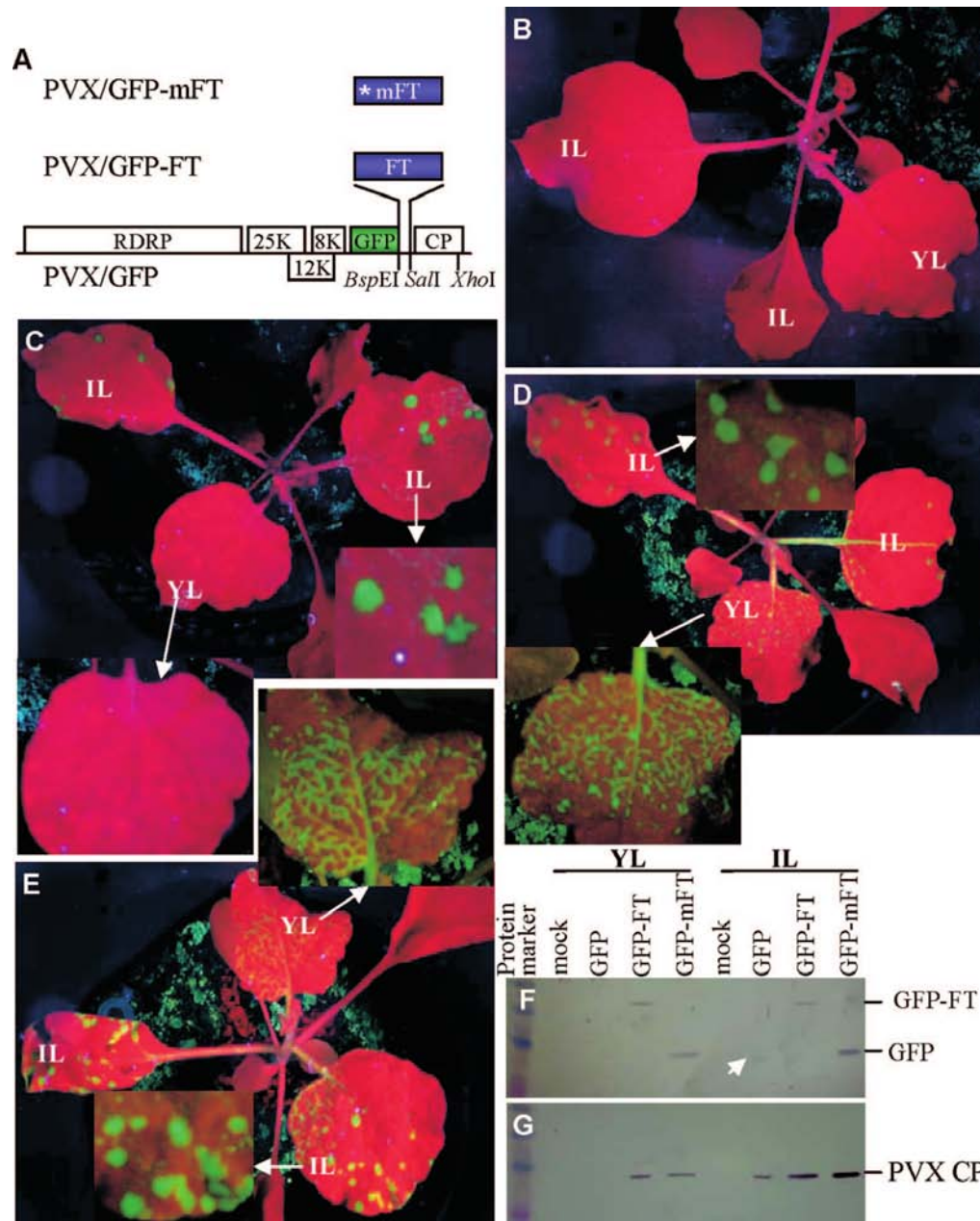
Li, C. *et al.* A cis element within flowering locus T mRNA determines its mobility and facilitates trafficking of heterologous viral RNA. *J. Virol.* **83**, 3540–3548 (2009).



Li, C. *et al.* A cis element within flowering locus T mRNA determines its mobility and facilitates trafficking of heterologous viral RNA. *J. Virol.* **83**, 3540–3548 (2009).



Li, C. *et al.* A cis element within flowering locus T mRNA determines its mobility and facilitates trafficking of heterologous viral RNA. *J. Virol.* **83**, 3540–3548 (2009).



Li, C. *et al.* A cis element within flowering locus T mRNA determines its mobility and facilitates trafficking of heterologous viral RNA. *J. Virol.* **83**, 3540–3548 (2009).