

A decorative graphic featuring a central light green rectangular area with a gradient. This area is surrounded by intricate, swirling green vines, leaves, and small flowers. The vines are thin and elegant, creating a sense of movement and growth. The overall design is clean and modern, suitable for a presentation or report.

# **V. POPULATION CHANGES**



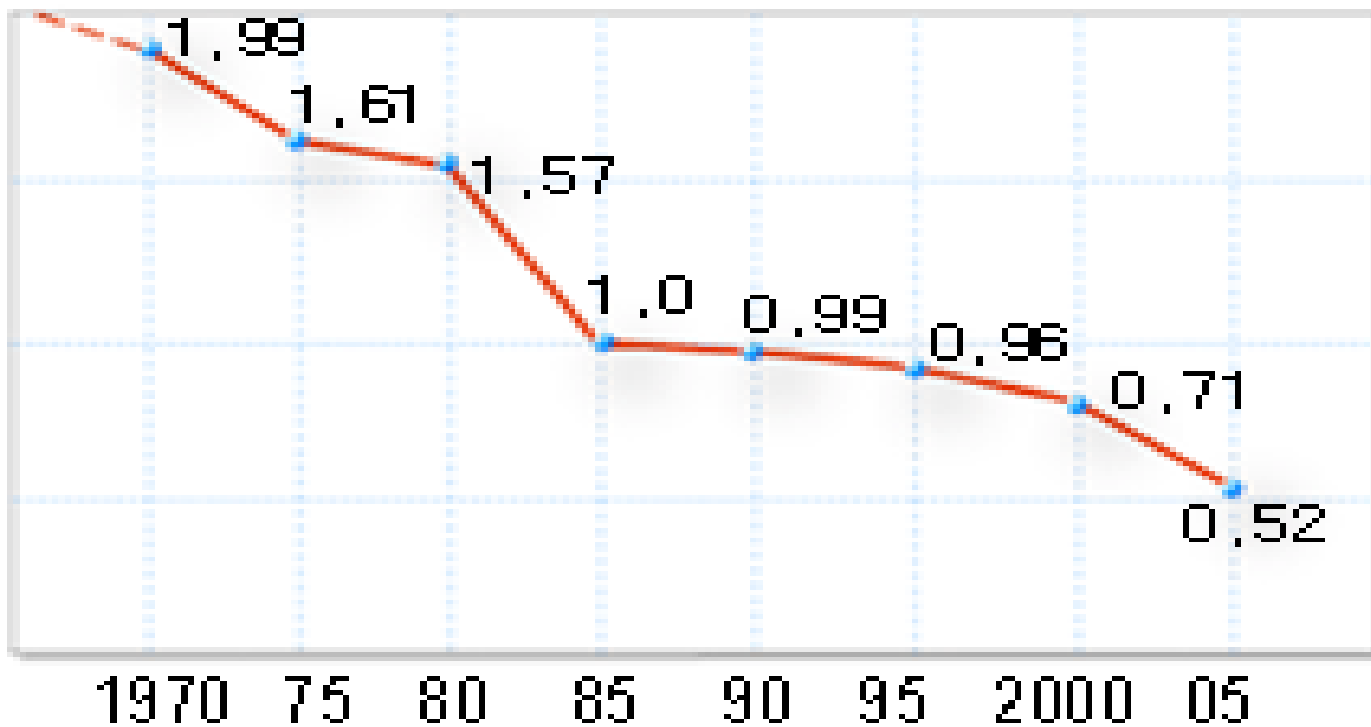
# Key Features of Korean Population

1. Decrease in population growth rate & potential decline of total population

1970	1.99%
2005	0.44%
2010	0.30%
2020	0.01%
2030	-0.28%

Source: Statistics Korea

## Decrease in population growth rate



Source: Statistics Korea



## Population Changes in Korea (‘000)

Region	Year						
	1980	1985	1990	1995	2000	2005	2010
Seoul	8,364	9,639	10,613	10,231	9,895	9,820	9,631
Kyonggi -do	4,933	4,794	6,156	7,650	8,984	10,415	11,196
Total S. Korea	37,436	40,448	43,411	44,609	46,136	47,278	48,580

Source: Statistics Korea



## 2. Changing Sex Ratio at Birth



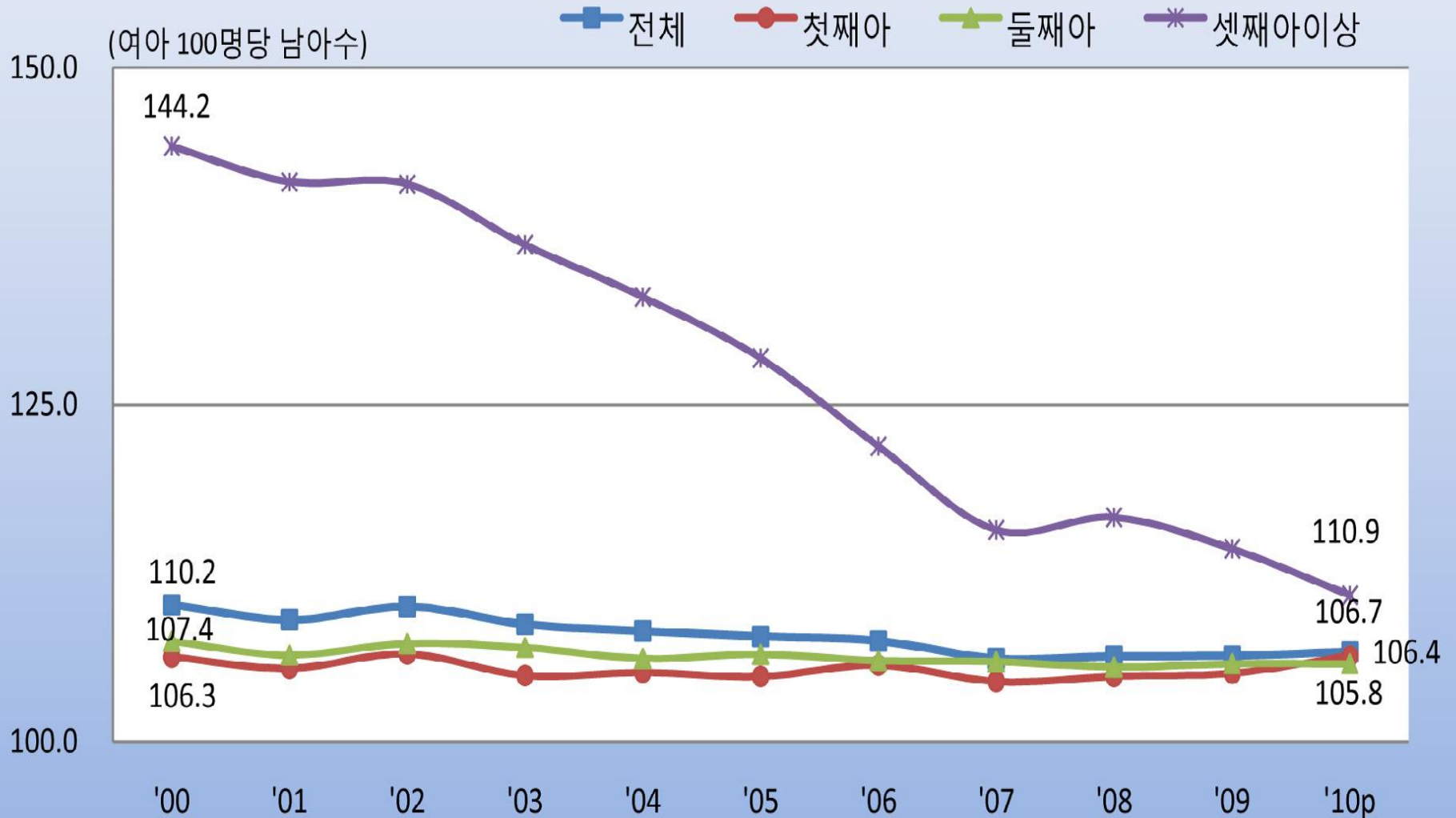
# Sex Ratio of Korea

	1985	1990	1995	2000	2005	2010
<b><i>Average</i></b>	<i>109.5</i>	<i>116.5</i>	<i>113.2</i>	<i>110.2</i>	<i>107.8</i>	<i>106.9</i>
First Child	106.0	108.5	105.8	106.2	104.8	106.4
Second Child	107.8	117.0	111.7	107.4	106.5	105.8
Third+ Child	134.2	192.7	180.2	143.9	128.5	110.9

Source: Statistics Korea

# Sex Ratio by order of birth

Source: Statistics Korea





## Key Features of Korean Population (cont.)

### 3. Increasing Life Expectancy

	female	male
1971	66.1	59.0
1981	70.5	62.3
1991	75.9	67.7
2008	83.3	76.5
2010	84.1	77.2

Source: Statistics Korea





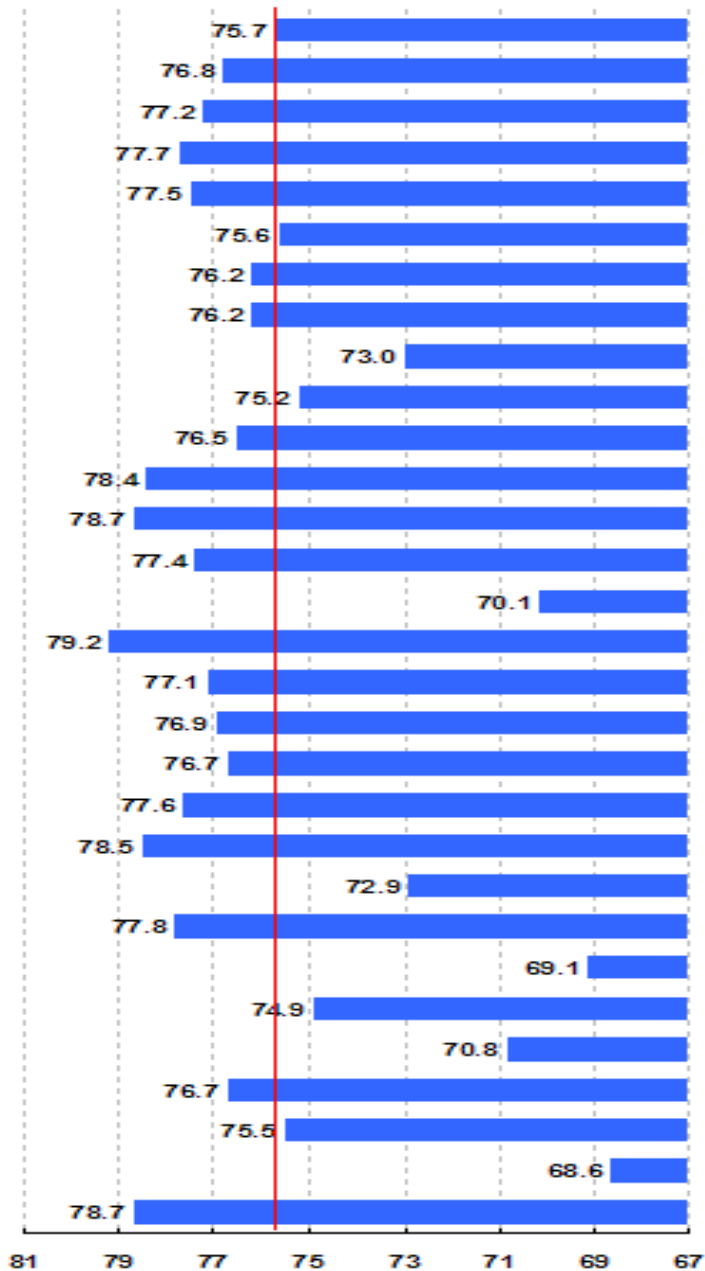
# Life Expectancy

Source: Statistics Korea

Age	male	female
40	37.9	44.4
45	33.3	39.6
50	28.9	34.8
55	24.6	30.1
60	20.5	25.5
65	16.6	21.0
70	13.0	16.7
75	9.9	12.8

# 남 자

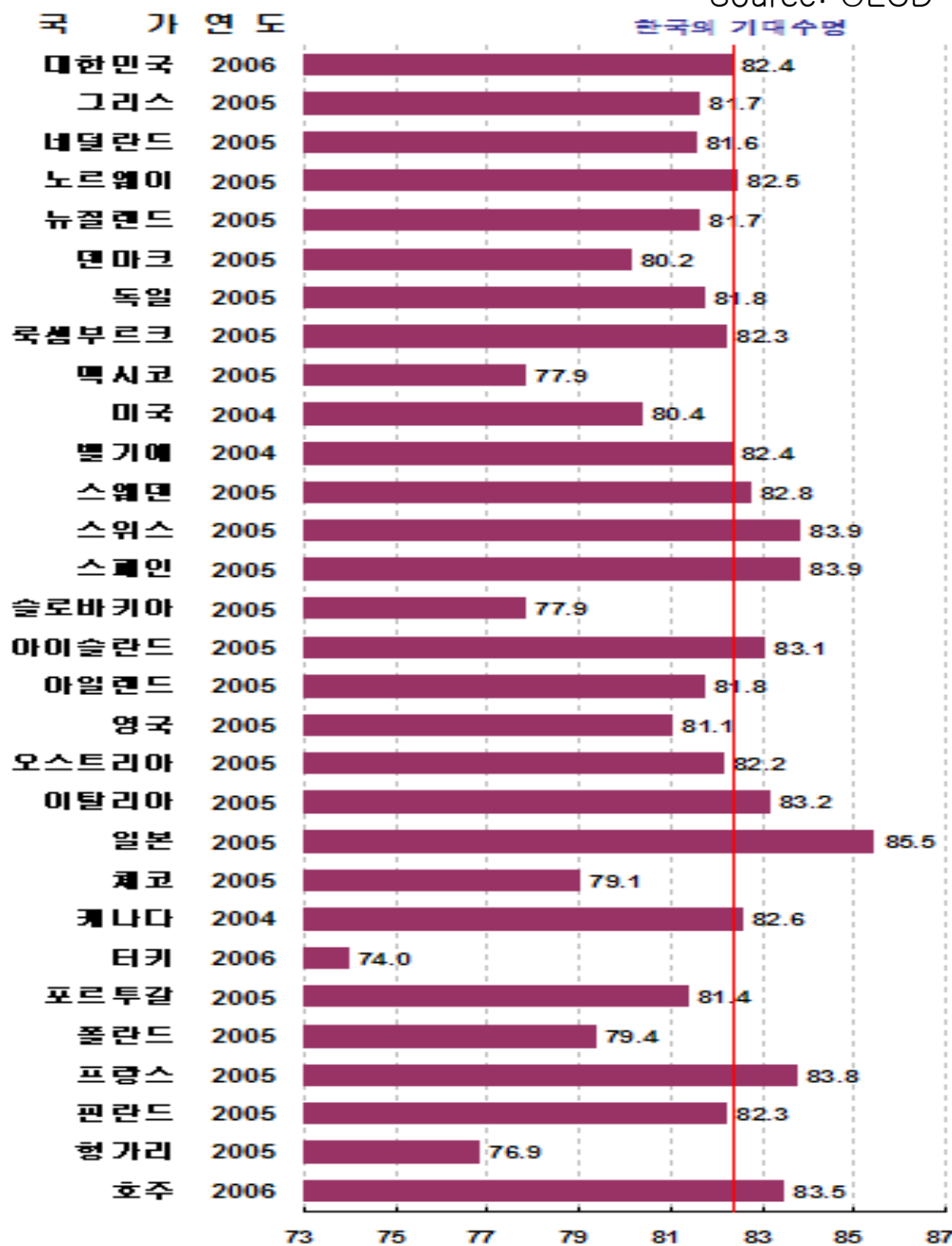
한국의 기대수명

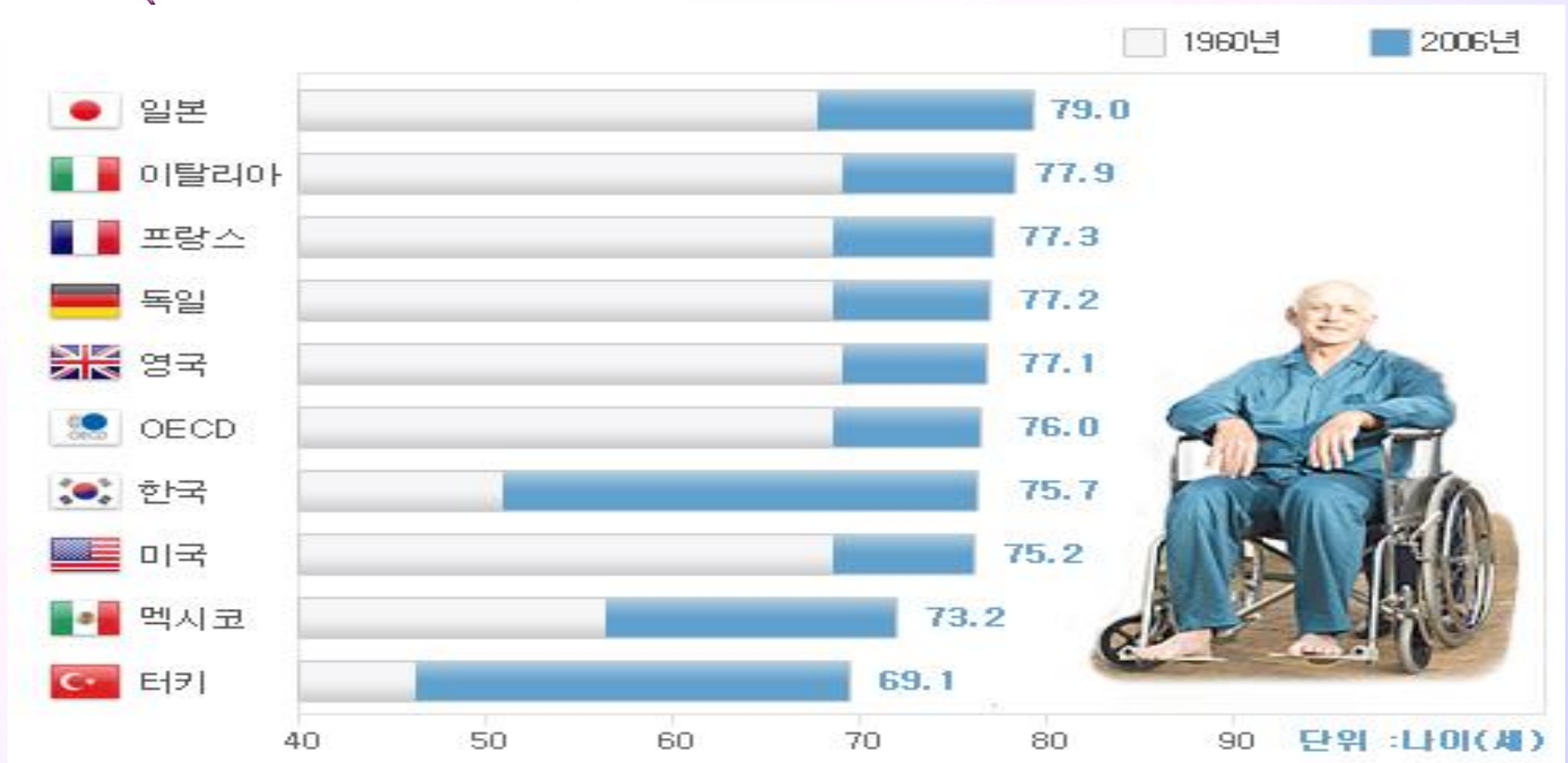


# 여 자

Source: OECD

한국의 기대수명





[http://img.kormedi.com/news/article/\\_icsFiles/artimage/2009/05/11/c\\_km601/cc\\_20090509.jpg](http://img.kormedi.com/news/article/_icsFiles/artimage/2009/05/11/c_km601/cc_20090509.jpg)



## 4. Decline of Total Fertility Rate (TFR)

Source: Statistics Korea

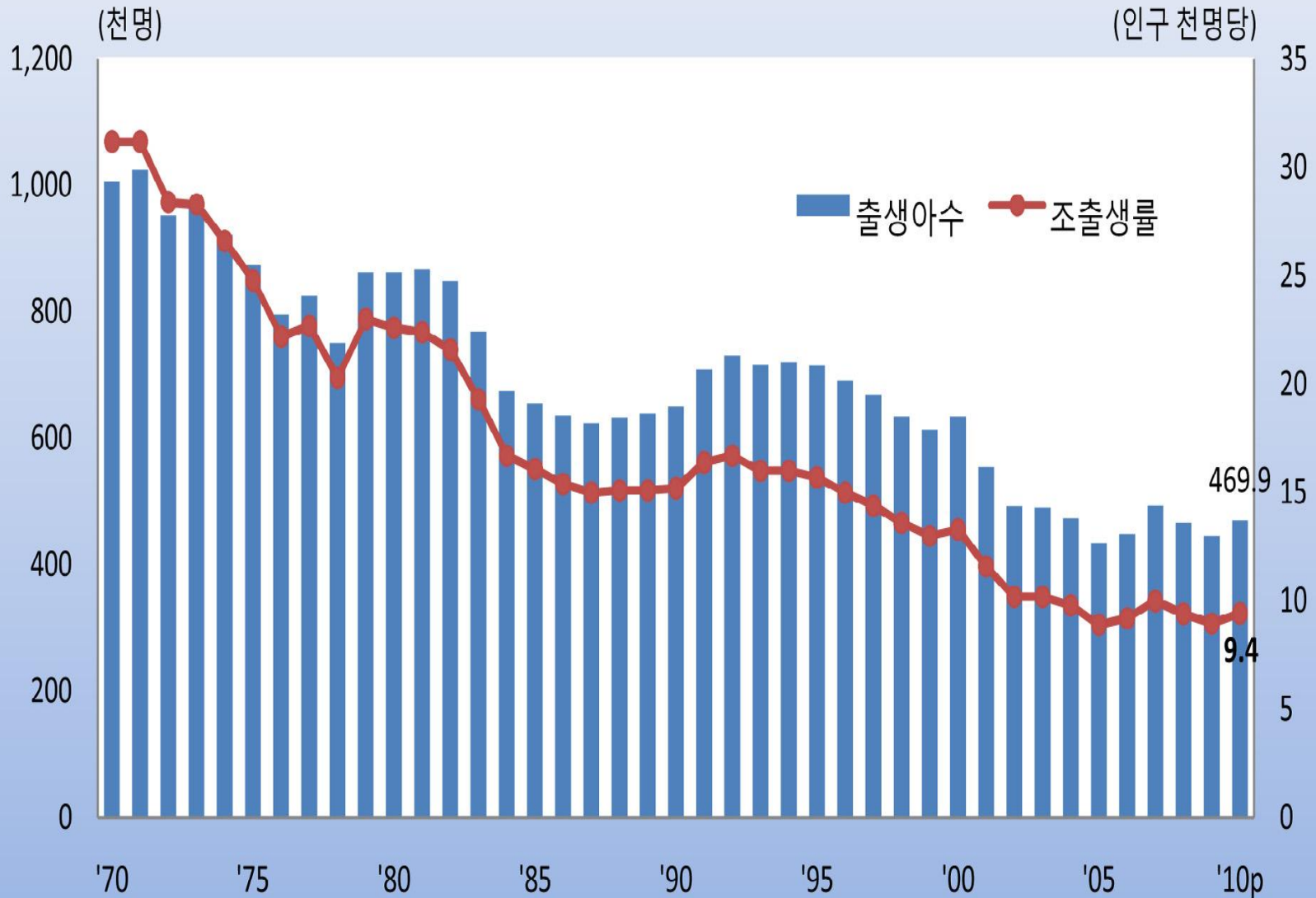
# Decline of Total Fertility Rate

Source: Statistics Korea



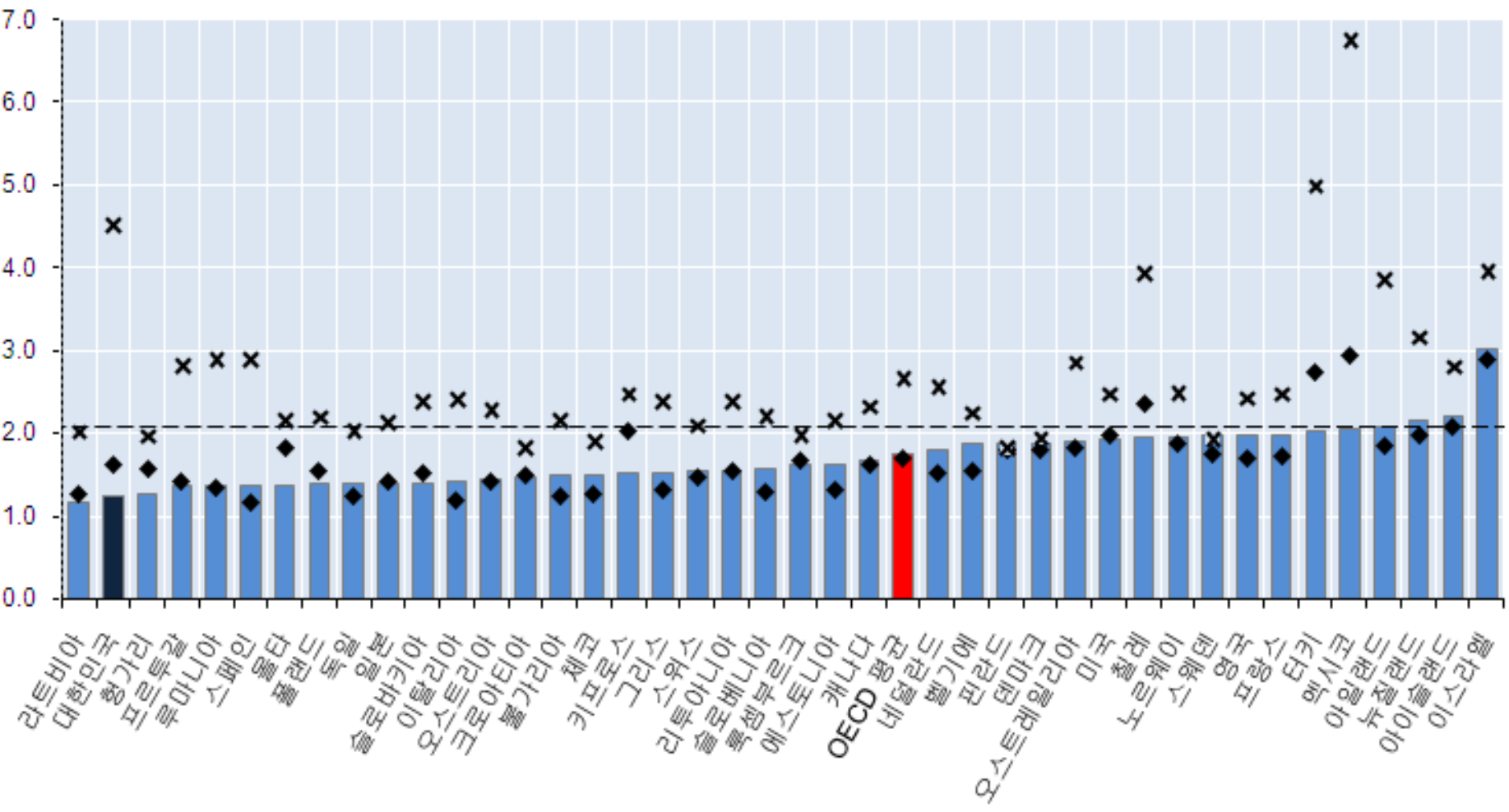
# Number of Birth and Crude Birth Rate

Source: Statistics Korea



# OECD 주요국 및 기타 국가의 합계출산율(2010년)

(가임여성 1명당 명)



※ 대한민국(2011 data), 캐나다, 칠레, 키프로스, 루마니아(2009 data)  
 (출처: www.oecd.org/els/social/family/database, 2012.8.9)





## TFR comparison

Source: OECD

<b>Year</b>	<b>Korea</b>	<b>Japan</b>	<b>USA</b>	<b>England</b>	<b>France</b>	<b>Italy</b>	<b>Germany</b>
<b>2007</b>	<b>1.26</b>	<b>1.34</b>	<b>-</b>	<b>-</b>	<b>1.96</b>	<b>1.34</b>	<b>-</b>
<b>2006</b>	<b>1.13</b>	<b>1.32</b>	<b>2.10</b>	<b>1.84</b>	<b>1.98</b>	<b>1.35</b>	<b>1.33</b>
<b>2005</b>	<b>1.08</b>	<b>1.26</b>	<b>2.05</b>	<b>1.79</b>	<b>1.92</b>	<b>1.32</b>	<b>1.34</b>
<b>2004</b>	<b>1.16</b>	<b>1.29</b>	<b>2.05</b>	<b>1.77</b>	<b>1.90</b>	<b>1.33</b>	<b>1.36</b>
<b>2003</b>	<b>1.19</b>	<b>1.29</b>	<b>2.04</b>	<b>1.71</b>	<b>1.87</b>	<b>1.29</b>	<b>1.34</b>
<b>2002</b>	<b>1.17</b>	<b>1.32</b>	<b>2.01</b>	<b>1.64</b>	<b>1.86</b>	<b>1.27</b>	<b>1.34</b>
<b>2001</b>	<b>1.30</b>	<b>1.33</b>	<b>2.03</b>	<b>1.63</b>	<b>1.88</b>	<b>1.25</b>	<b>1.35</b>





Source: Statistics Korea

	1985	1990	1995	2000	2005	2007
Sex ratio	109.5	116.5	113.2	110.2	107.7	106.1
First	106.0	108.5	105.8	106.2	104.8	104.4
Second	107.8	117.0	111.7	107.4	106.4	105.9
Third	134.2	192.7	180.2	143.9	127.7	115.2
Fourth					132.6	119.4





# Family Planning Posters (1980s)



