

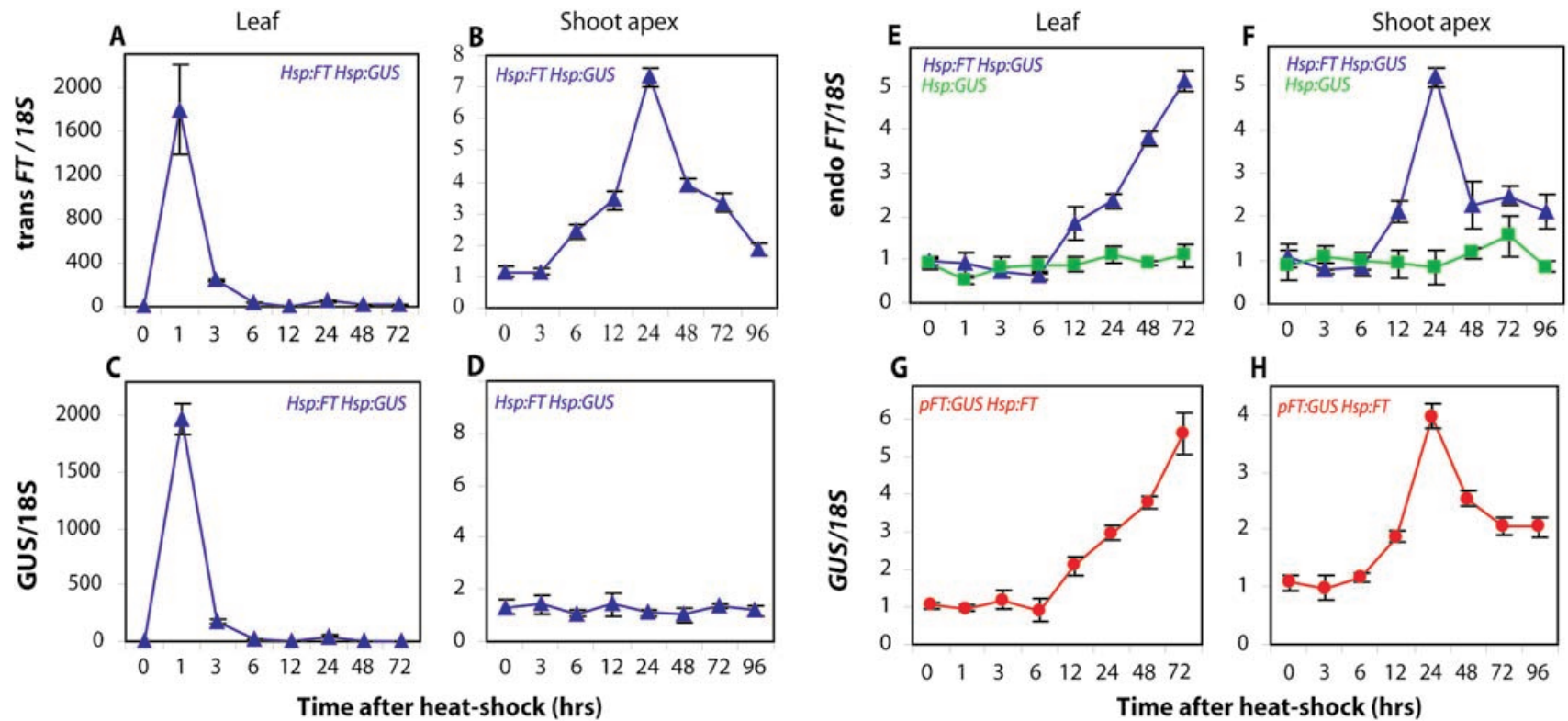
FLOWERING LOCUS T (2)

FT protein movement

- The mRNA of the Arabidopsis Gene FT Moves from Leaf to Shoot Apex and Induces Flowering
- Tao Huang, Henrik Böhlenius, Sven Eriksson, François Parcy, Ove Nilsson* (2005) Science

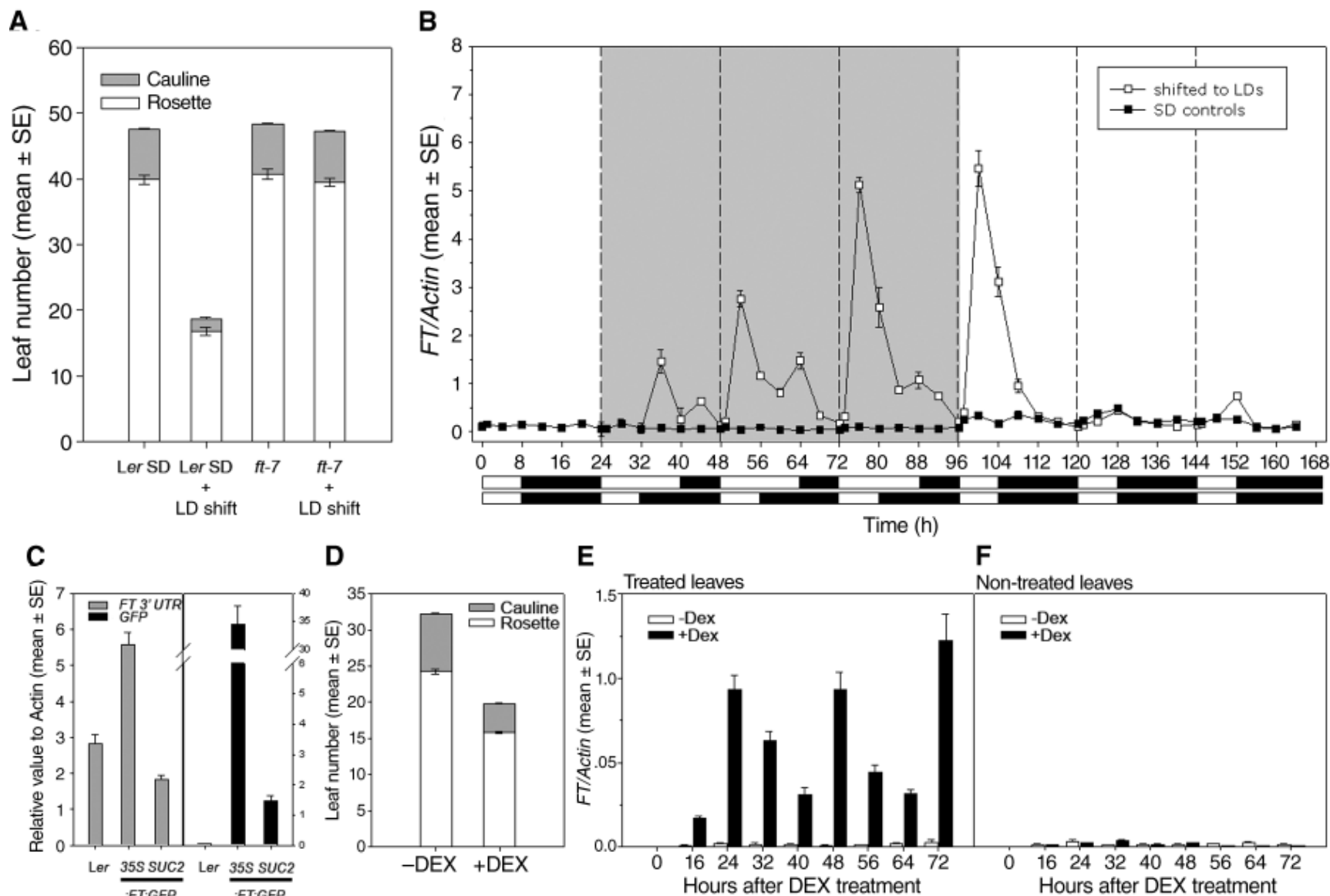
Huang, T., Böhlenius, H., Eriksson, S., Parcy, F. & Nilsson, O. The mRNA of the Arabidopsis gene FT moves from leaf to shoot apex and induces flowering. *Science* **309**, 1694–1696 (2005).

Huang, T., Böhlenius, H., Eriksson, S., Parcy, F. & Nilsson, O. The mRNA of the Arabidopsis gene FT moves from leaf to shoot apex and induces flowering. *Science* **309**, 1694–1696 (2005).

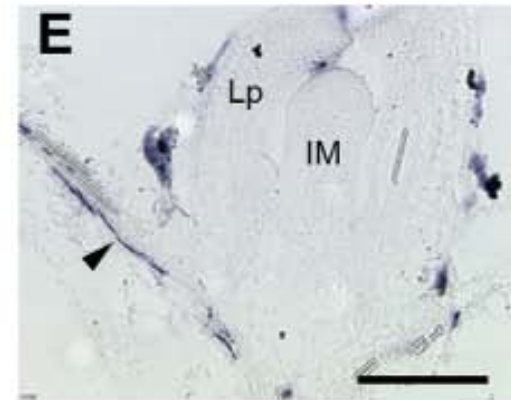
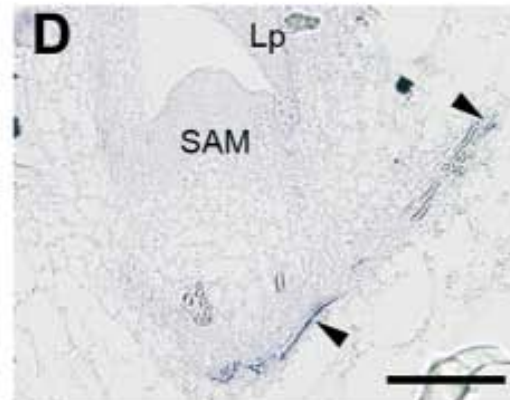
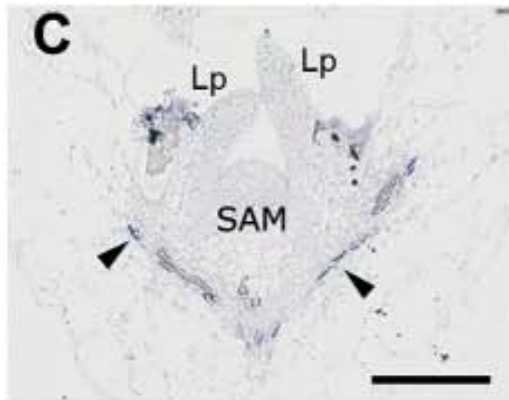
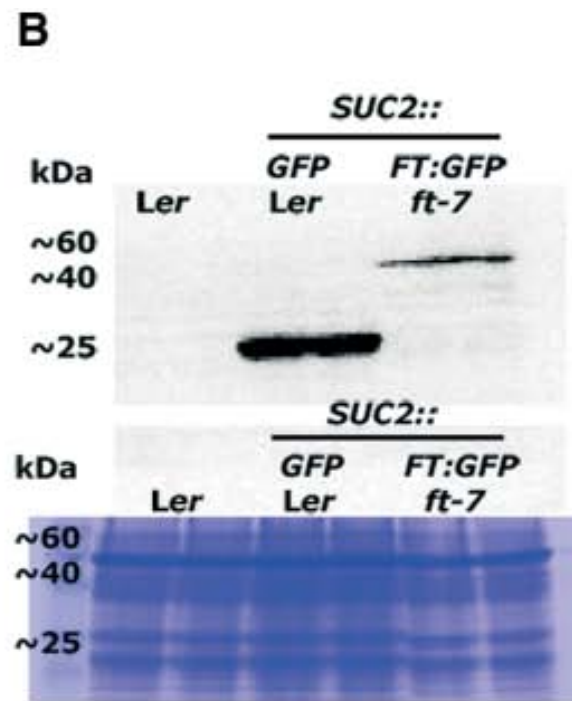
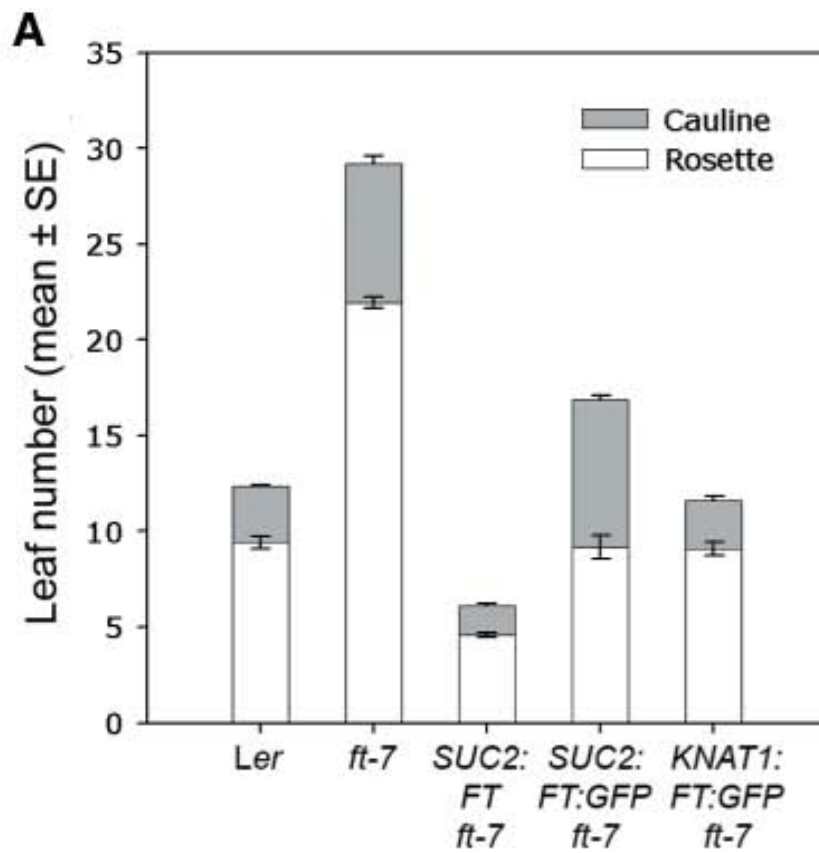


Huang, T., Böhlenius, H., Eriksson, S., Parcy, F. & Nilsson, O. The mRNA of the Arabidopsis gene FT moves from leaf to shoot apex and induces flowering. *Science* **309**, 1694–1696 (2005).

- FT Protein Movement Contributes to Long-Distance Signaling in Floral Induction of Arabidopsis
- Laurent Corbesier, Coral Vincent,* Seonghoe Jang,* Fabio Fornara, Qingzhi Fan, Iain Searle, Antonis Giakountis, Sara Farrona, Lionel Gissot, Colin Turnbull, George Coupland (2007) Science



Corbesier, L. *et al.* FT protein movement contributes to long-distance signaling in floral induction of Arabidopsis. *Science* **316**, 1030–1033 (2007).



Corbesier, L. *et al.* FT protein movement contributes to long-distance signaling in floral induction of *Arabidopsis*. *Science* **316**, 1030–1033 (2007).

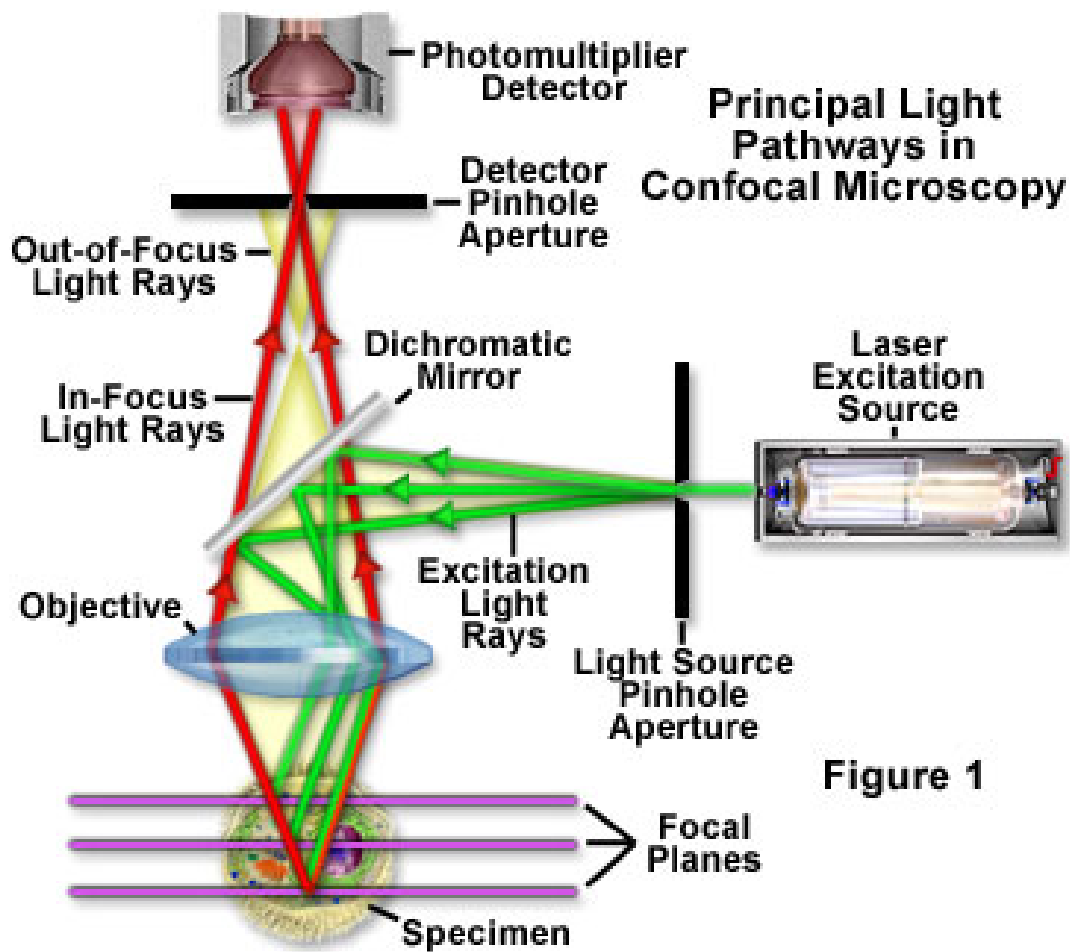
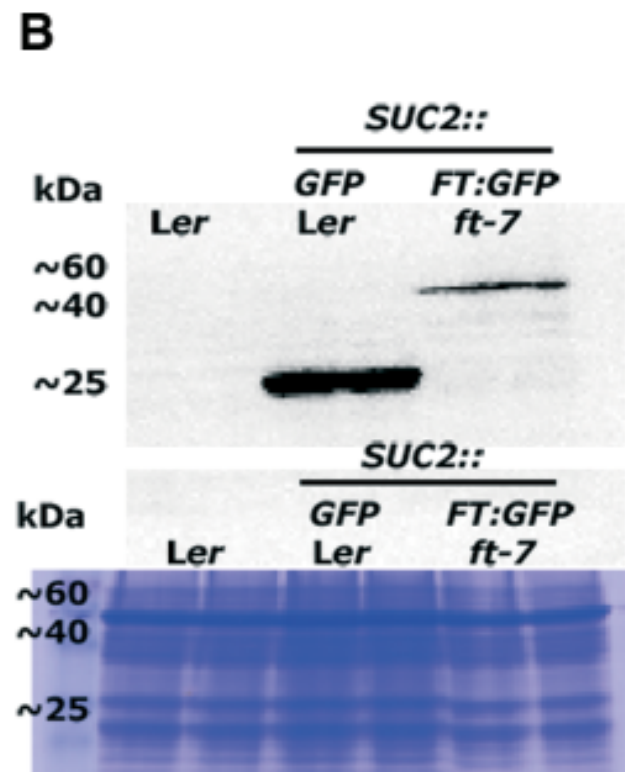
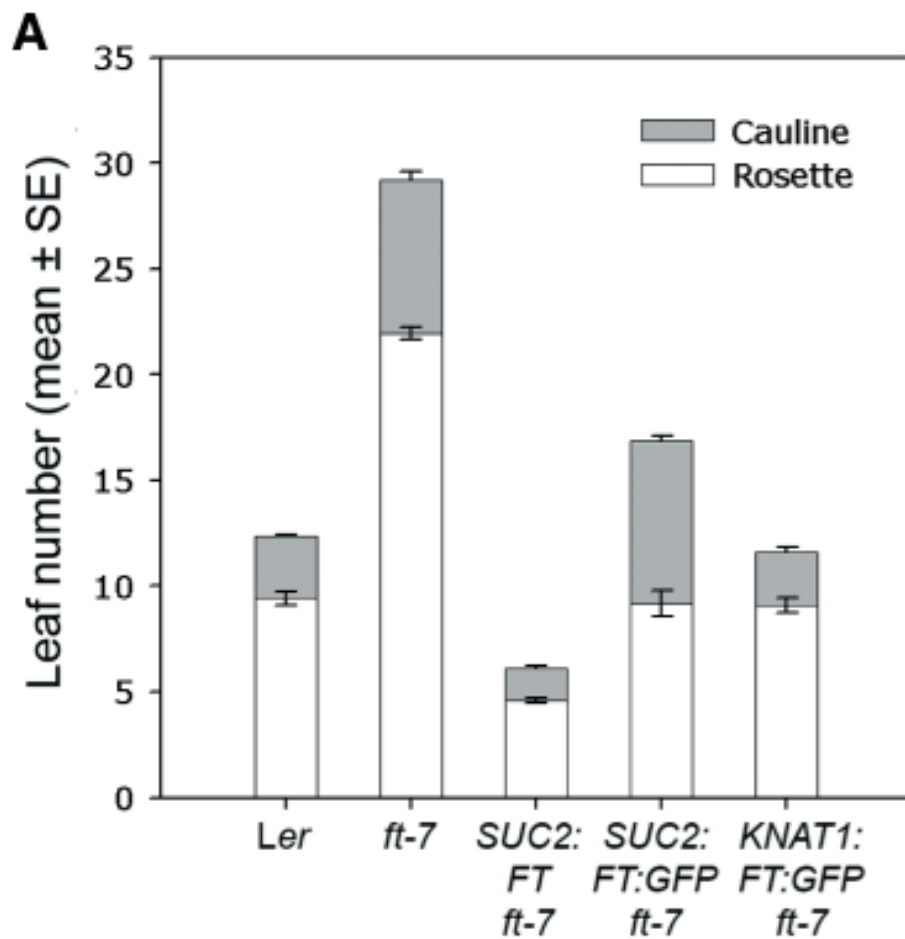
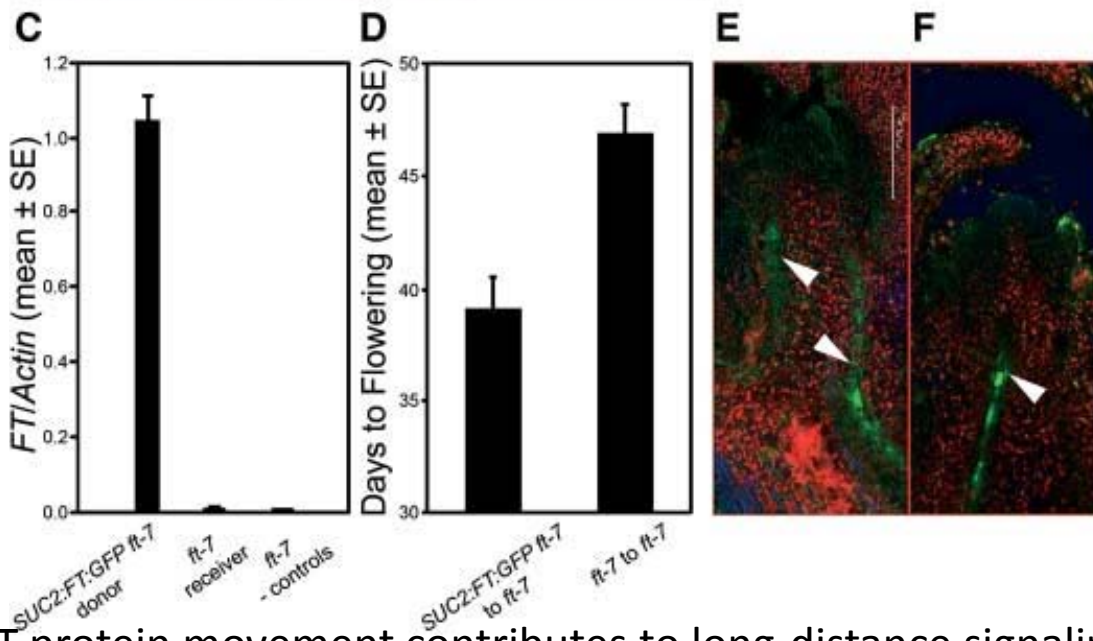
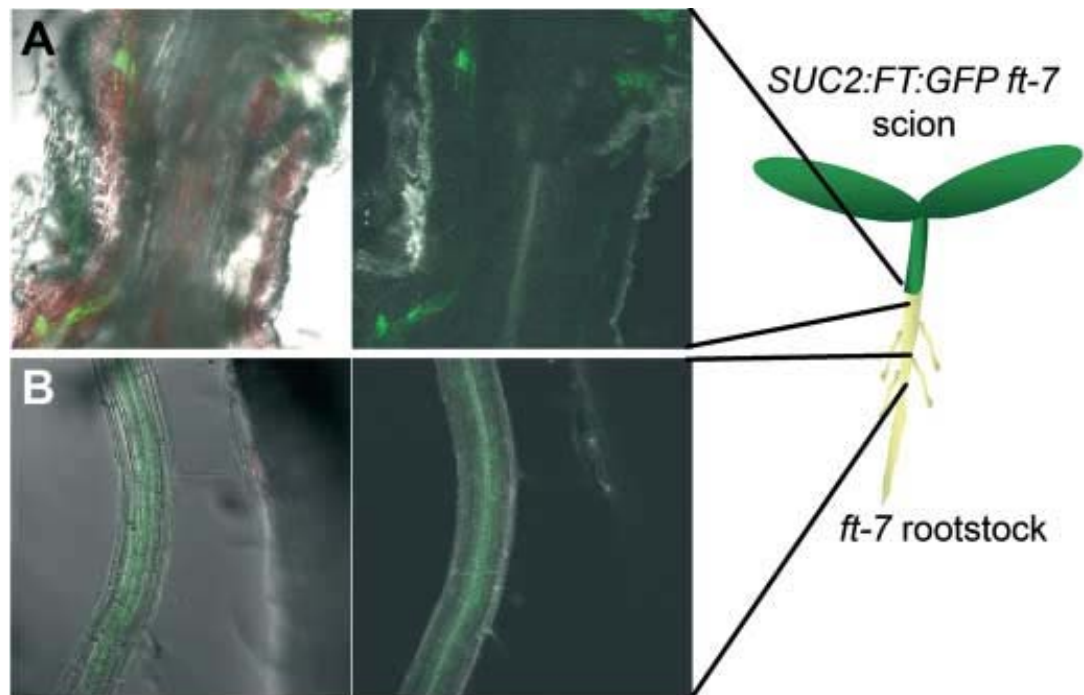


Figure 1

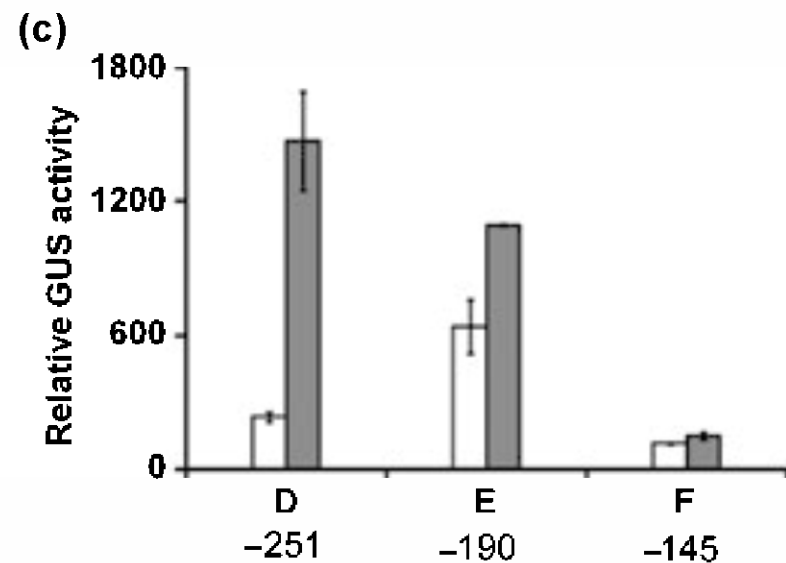
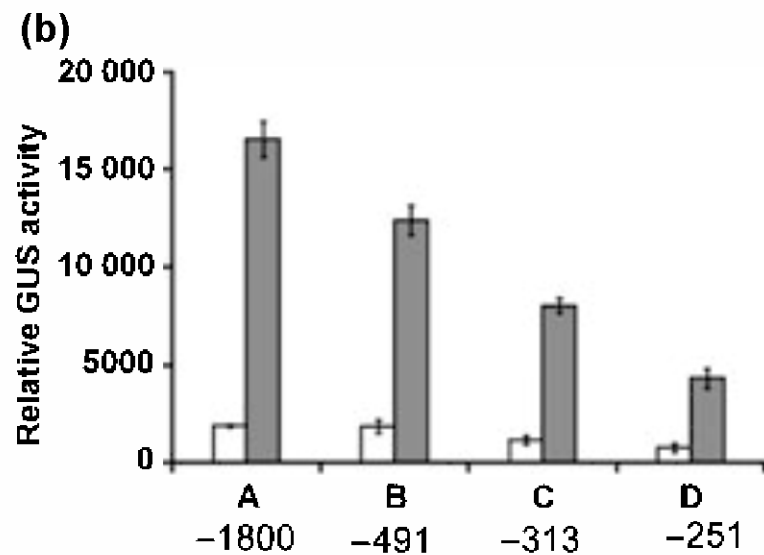
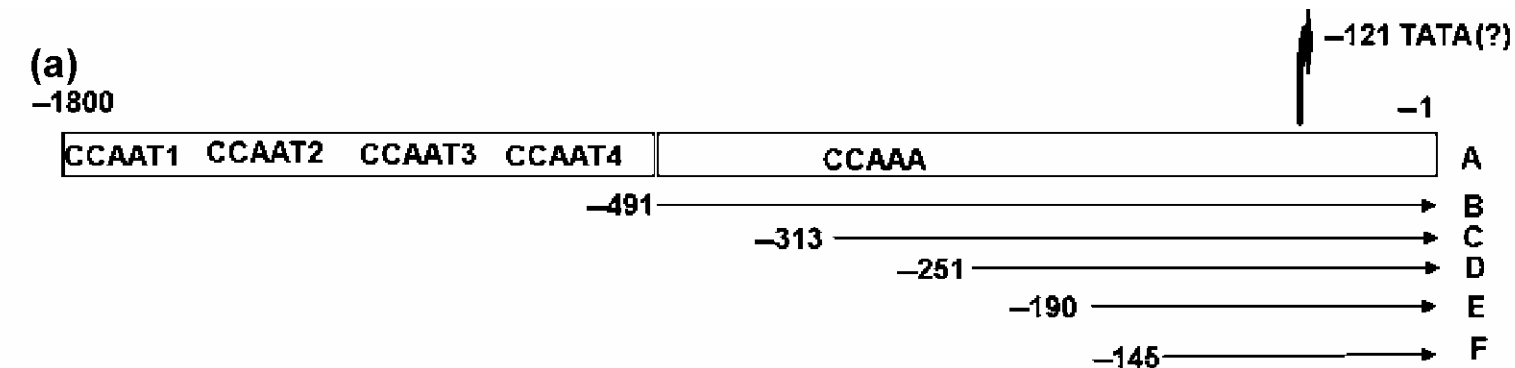


Corbesier, L. *et al.* FT protein movement contributes to long-distance signaling in floral induction of Arabidopsis. *Science* **316**, 1030–1033 (2007).



Corbesier, L. *et al.* FT protein movement contributes to long-distance signaling in floral induction of *Arabidopsis*. *Science* **316**, 1030–1033 (2007).

- The flowering time regulator **CONSTANS** is recruited to the **FLOWERING LOCUS T** promoter via a unique cis-element
- Shiv B. Tiwari, Yu Shen, Han-Chang Chang, Yanli Hou, Amanda Harris, Siu Fong Ma, Megan McPartland, Graham J. Hymus, Luc Adam, Colleen Marion, Alemu Belachew, Peter P. Repetti, T. Lynne Reuber and Oliver J. Ratcliffe (2010) *New Phytologist*



(a)

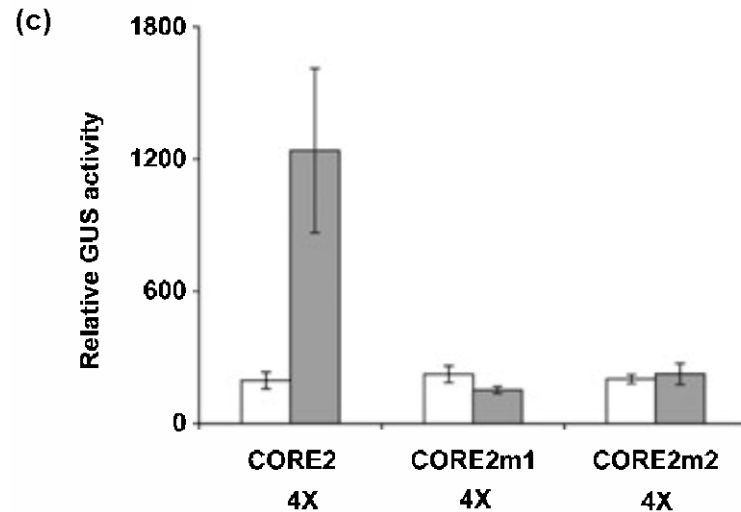
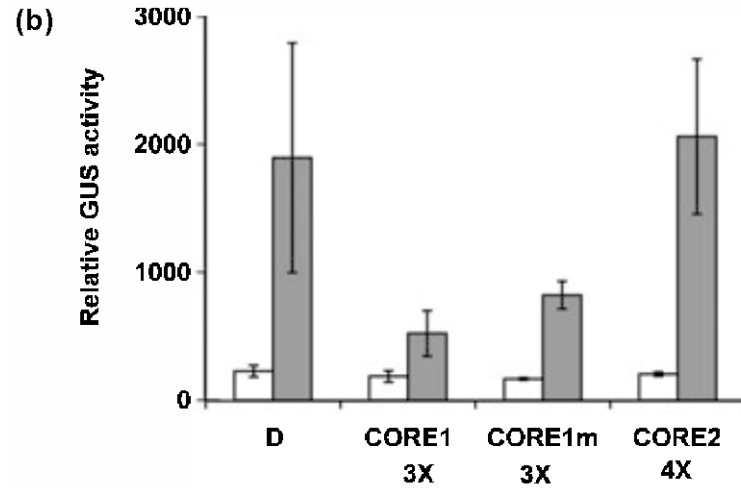
CORE1: CAATGTGTGATGTACGTA

CORE1m: CAATGTGTGATGTAAaTA

CORE2: GATTGTGGTTATGATT

CORE2m1: GATTaTaGTTATGATT

CORE2m2: GATTGTGGTT

CO protein	+	+	+	+
CORE2	-	-	+	-
CORE2m	-	+	-	-
CCAAT-box	-	-	-	+

